

RANGE COMPOSITION

The range consists of 6 models of worktop cupboards with sliding doors and splashback, varying in length from 1000 to 2000 mm and 1 corner model, 1100x1100 mm, with a hinged door and with two splashbacks. Inner space useful to store crockery and other kitchen utensil.



132663

1000/2000 mm

WORKTOP CUPBOARDS WITH UPSTAND **ZANUSSI** PROFESSIONAL

FUNCTIONAL AND CONSTRUCTION FEATURES

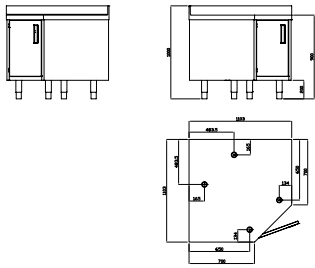
- ◆ Made entirely from stainless steel with welded construction for maximum strength.
- ◆ Inner welded frame in stainless steel to guarantee superior strength and stability.
- ◆ Upstand (splashback) with 8 mm rounded corner, 100 mm high, designed to be used against a wall.

- ◆ The 50 mm high worktop in 304 AISI stainless steel, 10/10 in thickness, incorporates a layer of sound deadening water-proof material, has upturned edges to protect the kitchen worker.
- ◆ Side and base panel in 304 AISI stainless steel, 10/10 in thickness reinforced.
- ◆ The worktop cupboards are equipped with an intermediate shelf that can be positioned at three different heights.

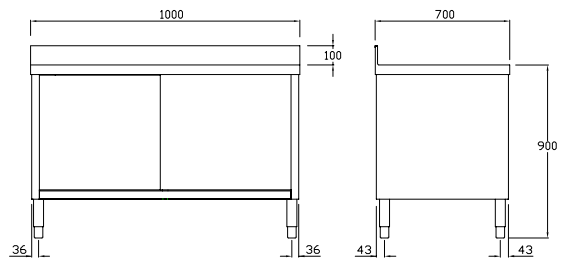
- ◆ The sound-deadened sturdy sliding doors in 304 AISI stainless steel are on tracks located flush to the front of the frame (except for code 132667).
- ◆ Easy access to the cupboard interior on all lengths guaranteed by the use of only 2 doors.
- ◆ All panel edges are upturned to guarantee the safety of the kitchen worker.
- ◆ 200 mm high AISI 304 stainless steel feet, 64 mm in diameter, adjustable by -50/+30 mm.
- ◆ All models comply with the more strict international standards as far as hygiene and cleanability are concerned.

TECHNICAL DATA							
CHARACTERISTICS	MODELS						
	MTNASP 132667	MTN1010P 132661	MTN1210P 132662	MTN1410P 132663	MTN1610P 132664	MTN1810P 132665	MTN2010P 132666
External dimensions - mm							
width	1100	1000	1200	1400	1600	1800	2000
depth	1100	700	700	700	700	700	700
height	1000	1000	1000	1000	1000	1000	1000
Upstand dimensions - mm							
height	100	100	100	100	100	100	100
depth	13	13	13	13	13	13	13
radius	R=8	R=8	R=8	R=8	R=8	R=8	R=8
Internal cupboard dimensions - mm							
width	530	910	1110	1310	1510	1710	1910
depth	850	645	645	645	645	645	645
height	597	597	597	597	597	597	597
N° and type of door	1, Hinged	2, Sliding	2, Sliding	2, Sliding	2, Sliding	2, Sliding	2, Sliding
Net weight - kg.	85	50	55	60	65	70	75
Corner model	●						

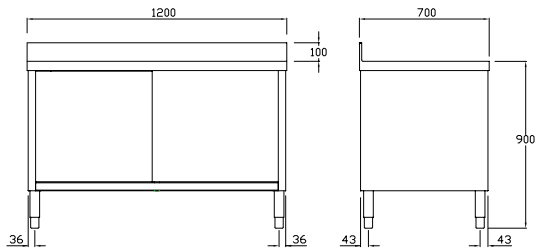
132667



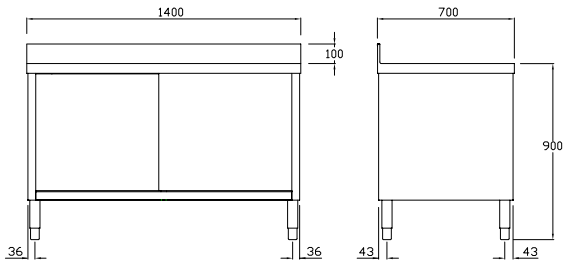
132661



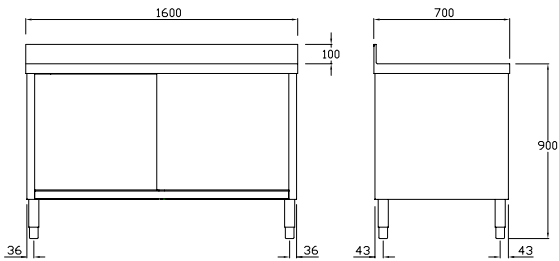
132662



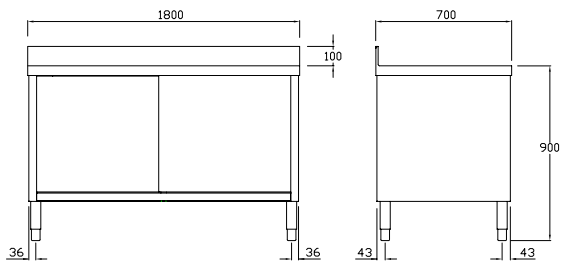
132663



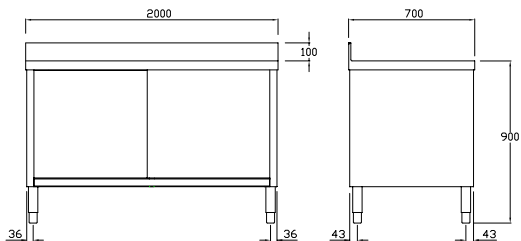
132664



132665



132666



OPTIONAL ACCESSORIES

ACCESSORIES

MODELS

	MTNASP 132667	MTN1010P 132661	MTN1210P 132662	MTN1410P 132663	MTN1610P 132664	MTN1810P 132665	MTN2010P 132666
SET OF 4 WHEELS (2 WITH BRAKE) D. 125 MM		855880	855880	855880	855880	855880	855880

ZANUSSI
PROFESSIONAL

www.zanussiprofessional.com