

## RANGE COMPOSITION

EVO700: a range of over 100 models designed to guarantee the highest level of performance, reliability, energy saving, safety standards and ergonomic operation. These concepts are reflected throughout the line in its modularity, construction and numerous configurations: countertop (on base or table), free-standing, on concrete or stainless steel socle, bridged or cantilever. Thanks to its advance technology and premium performance, EVO700 is a perfect solution for institutions of small sizes with limited footprint as well as restaurants needing to obtain the most from the kitchen space. The models detailed in this sheet are electric bain maries, ½ and full modules, which ensure that the food is held at the correct temperature.



# EVO700

## BAIN MARIE ZANUSSI PROFESSIONAL

## FUNCTIONAL AND CONSTRUCTION FEATURES

- ◆ Bain Marie used for keeping cooked food at serving temperatures using hot water.
- ◆ The stainless steel well features rounded corners and is seamlessly welded to the worktop of the appliance for fast, safe and easy cleaning.
- ◆ One piece pressed worktop in 1,5mm stainless steel with smooth, rounded corners.
- ◆ Front panel in stainless steel with Scotch Brite finish.
- ◆ Incoloy armoured heating elements positioned beneath the base of the well (electric models).
- ◆ Temperature can be set from 30° to 90°C.
- ◆ Filling water level marked on later side of basin.
- ◆ Unit to feature manual refill of well.

- ◆ The special design of the control knobs and bezels guarantees against water infiltration.
- ◆ Can be equipped with water filling tap.
- ◆ All models have right-angled side edges to allow flush fitting joins between units, eliminating gaps and possible dirt traps.
- ◆ Well with rounded corners and edges is designed to take 1/1 GN containers with a maximum depth of 150 mm (1 set on the ½ module units and 2 sets on the full module units, to be requested as

accessories).

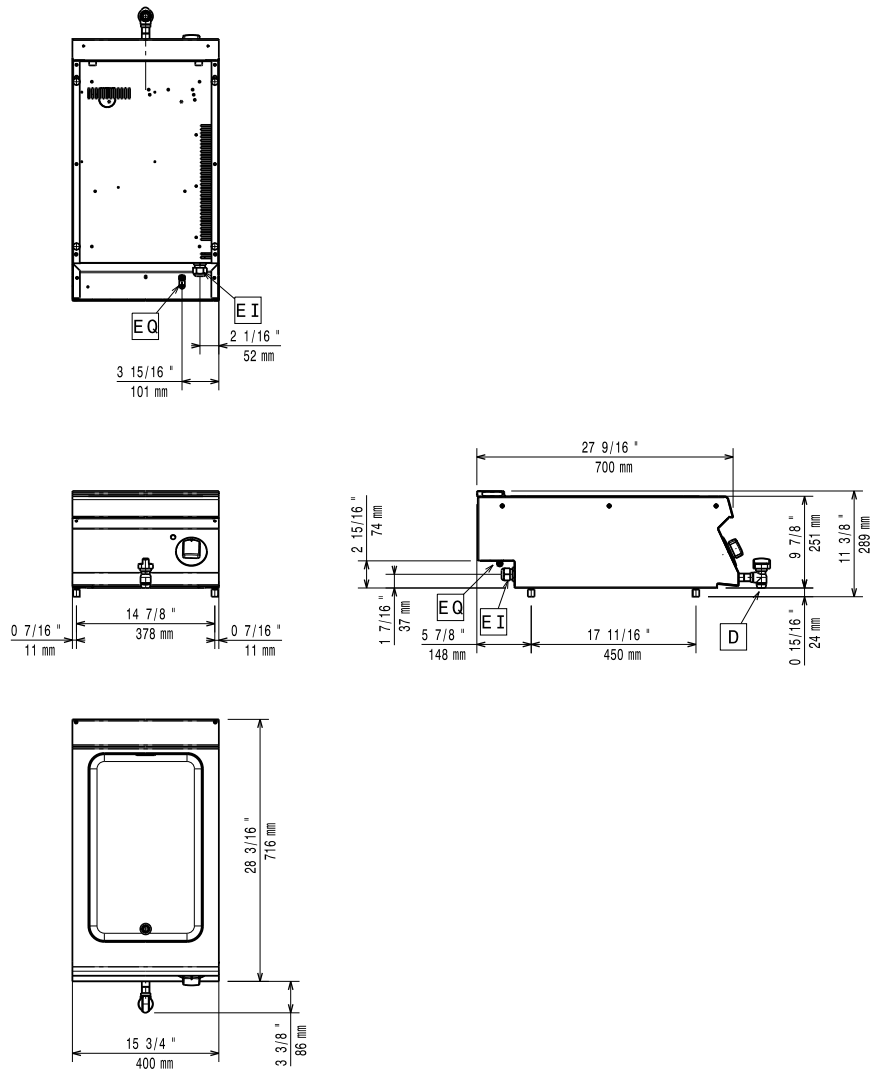
- ◆ Well drainage via front tap.
- ◆ IPX4 water protection.
- ◆ Main connections can be via the rear of the unit.
- ◆ All top models can be easily mounted on refrigerated base, open base cupboards, or bridging supports.
- ◆ All top models provided with service duct to facilitate installation.

TECHNICAL DATA			
CHARACTERISTICS	MODELS		
	Z7BMEDB000 372096	Z7BMEHB000 372097	Z7BMEHB00N 372145
Power supply	Electric	Electric	Electric
External dimensions - mm			
width	400	800	800
depth	700	700	700
height	250	250	250
N° of wells	1	1	1
Usable well dimensions - mm			
width	306	630	630
depth	510	510	510
height	156	156	156
Thermostatic	●	●	●
Power - kW			
installed-electric	1.5	3	3
Net weight - kg.	20	27	27
Supply voltage	230 V, 1N, 50/60	400 V, 2N, 50/60	230 V, 3, 50/60

OPTIONAL ACCESSORIES			
ACCESSORIES	MODELS		
	Z7BMEDB000 372096	Z7BMEHB000 372097	Z7BMEHB00N 372145
2 SIDE COVERING PANELS H=250-D=700-Z/OEM	206320	206320	206320
CHIMNEY COVER 400MM CLOSED	206269		
CHIMNEY COVER 400MM OPEN	206284		
CHIMNEY UPSTAND 400MM	206303		
CHIMNEY UPSTAND 800MM		206304	206304
DRILLED FALSE BOTTOM F.BAIN-M.-1 MODULE		921623	921623
DRILLED FALSE BOTTOM F.BAIN-M.-1/2 MOD.	921622		
FRONTAL HANDRAIL 1200 MM	206191	206191	206191
FRONTAL HANDRAIL 1600 MM	206192	206192	206192
FRONTAL HANDRAIL 400 MM	206166		
FRONTAL HANDRAIL 800 MM	206167	206167	206167
LARGE HANDRAIL(PORTIONING SHELF)400 MM	206185	206185	206185
LARGE HANDRAIL(PORTIONING SHELF)800 MM	206186	206186	206186
SIDE HANDRAIL-RIGHT/LEFT HAND-700 LINE	206240	206240	206240
SUPPORT FOR "BRIDGE" SYSTEM 1000 MM	206138	206138	206138
SUPPORT FOR "BRIDGE" SYSTEM 1200 MM	206139	206139	206139
SUPPORT FOR "BRIDGE" SYSTEM 1400 MM	206140	206140	206140
SUPPORT FOR "BRIDGE" SYSTEM 1600 MM	206141	206141	206141
SUPPORT FOR "BRIDGE" SYSTEM 400 MM	206154		
SUPPORT FOR "BRIDGE" SYSTEM 800 MM	206137	206137	206137
WATER COLUMN EXTENSION FOR 700 LINE	206291	206291	206291
WATER COLUMN WITH SWIVEL ARM	206289	206289	206289
WATER FILLING TAP-BAIN-MARIE TOP D=700MM		921627	921627

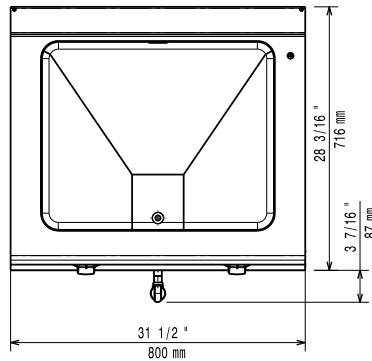
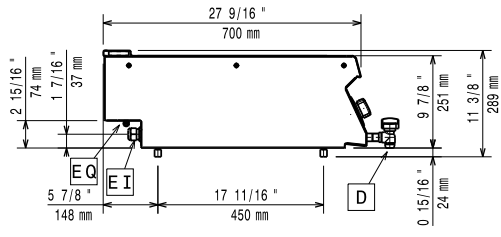
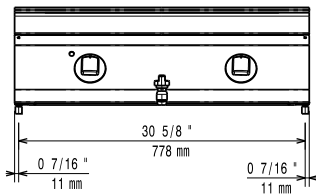
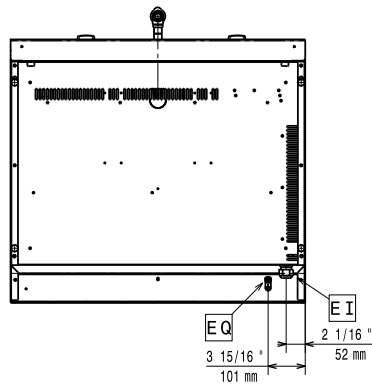


www.zanussiprofessional.com



LEGEND

	Z7BMEDB000 372096
D - Water drain	1/2"
EI - Electrical connection	230 V, 1N, 50/60



LEGEND

	Z7BMEHB000 372097	Z7BMEHB00N 372145
D - Water drain	1/2"	1/2"
EI - Electrical connection	400 V, 2N, 50/60	230 V, 3, 50/60