

RANGE COMPOSITION

Zanussi Professional offers a range of ice-making machines specially designed to produce ice cubes. All the models, whilst having a compact size, offer excellent performance and maximum efficiency. The range has been specifically designed for use in bars, restaurants, hotels and discos and can also be used in medical facilities.



730173

140/200 KG

ICE CUBERS

ZANUSSI
PROFESSIONAL

FUNCTIONAL AND CONSTRUCTION FEATURES

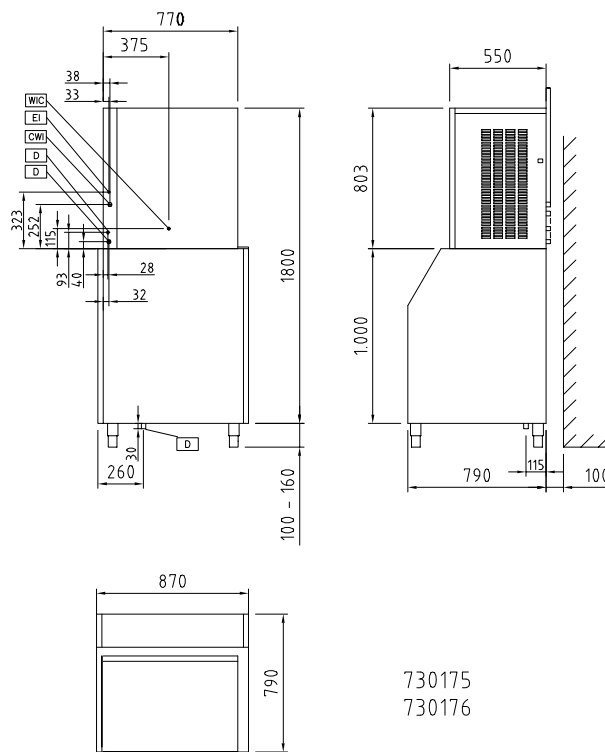
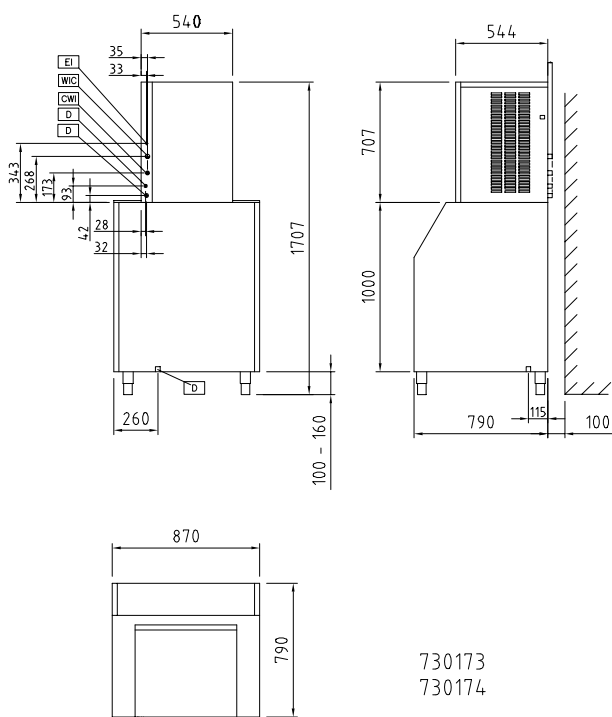
- ◆ All models are available in air-cooled or water-cooled versions*.
- ◆ The ice-making method (spray layering) guarantees compact, hygienically pure ice cubes that are resistant to melting.
- ◆ R404a refrigerant.

- ◆ Reliability is guaranteed by the quality of the construction materials used (plastic flap on the front, top and sides in ABS) and the sophisticated product and process technology involved.
- ◆ The compact dimensions of the ice cubers make them highly suitable for any location, particularly those where space is at a premium.

- ◆ The metal sprayers are easy to take away, permit a simple flowing and prevent limestone formation.
- ◆ All models comply with the standards required by the main international approval bodies and are CE marked.

* Water consumption and productivity have been calculated using a water temperature of 15°C and an ambient temperature of 21°C.

TECHNICAL DATA				
CHARACTERISTICS	MODELS			
	IMC140AB20 730173	IMC140WB20 730174	IMC200AB20 730175	IMC200WB20 730176
Air cooled	●		●	
Water cooled		●		●
Output - kg/day	140	140	200	200
Bin capacity - Kg	200	200	200	200
Kind of cube	7g	7g	7g	7g
External dimensions - mm				
width	870	870	870	870
depth	790	790	790	790
height	1707	1707	1800	1800
Refrigerant type	R404a	R404a	R404a	R404a
Power - kW				
installed-electric	1.4	1.4	1.6	1.6
Net weight - kg	159	159	164	164
Power supply - V, phases, Hz	220-240 V, 1N, 50	220-240 V, 1N, 50	220-240 V, 1N, 50	220/240 V, 1N, 50
INCLUDED ACCESSORIES				
S/S COLLECTION BIN 200KG FOR ICE MAKERS	1	1	1	1



LEGEND

	IMC140AB20 730173	IMC140WB20 730174	IMC200AB20 730175	IMC200WB20 730176
CWI - Cold water inlet	3/4"	3/4"	3/4"	3/4"
D - Water drain	24mm	24mm	24mm	24mm
EI - Electrical connection	220-240 V, 1N, 50	220-240 V, 1N, 50	220-240 V, 1N, 50	220/240 V, 1N, 50


www.zanussiprofessional.com