

## RANGE COMPOSITION

EVO700: range comprised of over 100 models designed to guarantee the highest level of performance, reliability, energy saving, safety standards and ergonomic operation. These concepts are reflected throughout the line in its modularity, construction and numerous configurations. Thanks to its advance technology and premium performance, the EVO700 is a perfect solution for institutions with a limited footprint as well as restaurants needing to obtain the most from the kitchen space. The models detailed in this sheet are 14 litres electric fryers with one or two wells.



178124

# EVO700

## ELECTRIC FRYERS - 14 LT **ZANUSSI** PROFESSIONAL

### FUNCTIONAL AND CONSTRUCTION FEATURES

- ◆ Tilting incoloy armoured high efficiency heating elements located inside the well.
- ◆ Deep drawn V-Shaped well with rounded corners for safe and easy cleaning
- ◆ The V-Shaped well is made from two pieces of pressed stainless steel that are seamlessly welded together for maximum hygiene, safety and reliability.
- ◆ Working temperature from 105°C to 185°C.
- ◆ Overheat safety thermostat.
- ◆ All models have right-angled side edges to allow flush-fitting joins between units, eliminating gaps and possible dirt traps.
- ◆ One piece pressed worktop in 1,5mm stainless steel with smooth, rounded corners.
- ◆ Front panel in stainless steel with Scotch Brite finish.
- ◆ Feet in stainless steel adjustable

in height 50mm.

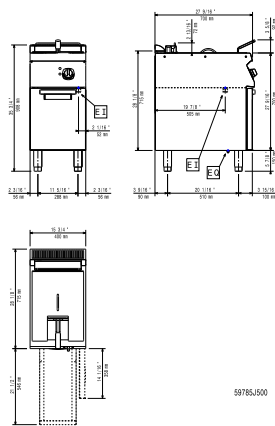
- ◆ The special design of the control knobs and bezels guarantees against water infiltration.
- ◆ Oil drainage via a tap into a drainage container positioned under the well thus simplifying the

consumed oil management and guaranteeing the operator safety.

- ◆ Main connections can be via the rear of the unit.
- ◆ Access to all components from the front.

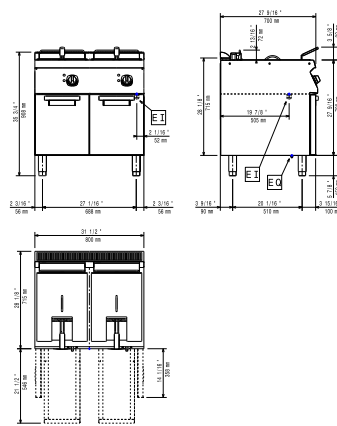
TECHNICAL DATA			
CHARACTERISTICS	MODELS		
	Z7FRED1FF0 372084	Z7FREH2FF0 372085	Z7FREH2FFN 372144
Power supply	Electric	Electric	Electric
External dimensions - mm			
width	400	800	800
depth	700	700	700
height	850	850	850
height adjustment	50	50	50
N° of wells	1	2	2
Usable well dimensions - mm			
width	240	240	240
depth	380	380	380
height	285	285	285
Thermostatic	●	●	●
Temperature limiter	●	●	●
Maximum Well Capacity -lt	12, 14	12, 14	12, 14
Power - kW			
installed-electric	8.7	17.4	17.4
Net weight - kg.	35	81	81
Supply voltage	400 V, 3N, 50/60	400 V, 3N, 50/60	230 V, 3, 50/60
INCLUDED ACCESSORIES			
BASKET FOR 14/15 LT FRYERS	1	2	2
DOOR FOR OPEN BASE CUPBOARD-ZANUSSI	1	2	2

372084

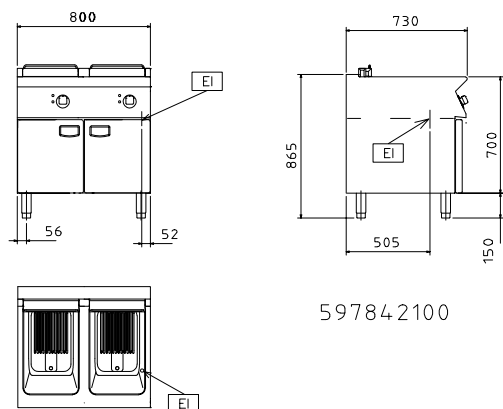


59785J500

372085



372144



59784-2100

## LEGEND

EI - Electrical connection

Z7FRED1FF0  
372084

400 V, 3N, 50/60

Z7FRED2FF0  
372085

400 V, 3N, 50/60

Z7FRED2FFN  
372144

230 V, 3, 50/60

## OPTIONAL ACCESSORIES

## ACCESSORIES

## MODELS

Z7FRED1FF0  
372084Z7FRED2FF0  
372085Z7FRED2FFN  
372144

2 1/2 BASKETS FOR 14/15 LT FRYERS

921692

921692

921692

2 SIDE COVERING PANELS H=700-D=700-Z/OEM

206319

206319

206319

2 SIDE KICKING STRIPS - 700 LINE

206249

206249

206249

2 SIDE KICKING STRIPS-CONCRETE INST-700

206265

206265

206265

4 FEET FOR CONCRETE INSTALLATION

206210

206210

206210

BASKET FOR 14/15 LT FRYERS

921691

921691

921691

CHIMNEY COVER 400MM OPEN

206284

CHIMNEY UPSTAND 400MM

206303

CHIMNEY UPSTAND 800MM

206304

206304

DOOR FOR OPEN BASE CUPBOARD-ZANUSSI

206342

206342

206342

FILTER FOR FRYER OIL COLLECTION BASIN

921693

921693

921693

FLANGED FEET KIT

206136

206136

206136

FRONT.KICK.STRIP F.CONCRETE INST.1000 MM

206150

206150

206150

FRONT.KICK.STRIP F.CONCRETE INST.1200 MM

206151

206151

206151

FRONT.KICK.STRIP F.CONCRETE INST.1600 MM

206152

206152

206152

FRONT.KICK.STRIP F.CONCRETE INST.200 MM

206146

206146

206146

FRONT.KICK.STRIP F.CONCRETE INST.400 MM

206147

206147

206147

FRONT.KICK.STRIP F.CONCRETE INST.800 MM

206148

206148

206148

FRONTAL HANDRAIL 1200 MM

206191

206191

206191

FRONTAL HANDRAIL 1600 MM

206192

206192

206192

FRONTAL HANDRAIL 400 MM

206166

FRONTAL HANDRAIL 800 MM

206167

206167

206167

FRONTAL KICKING STRIP 1000 MM

206177

206177

206177

FRONTAL KICKING STRIP 1200 MM

206178

206178

206178

FRONTAL KICKING STRIP 1600 MM

206179

206179

206179

FRONTAL KICKING STRIP 200 MM

206174

206174

206174

FRONTAL KICKING STRIP 400 MM

206175

206175

206175

FRONTAL KICKING STRIP 800 MM

206176

206176

206176

LARGE HANDRAIL(PORIONING SHELF)400 MM

206185

206185

206185

LARGE HANDRAIL(PORIONING SHELF)800 MM

206186

206186

206186

SIDE HANDRAIL-RIGHT/LEFT HAND-700 LINE

206240

206240

206240



ISO 14001



www.zanussiprofessional.com