

RANGE COMPOSITION

EVO700: range comprised of over 100 models designed to guarantee the highest level of performance, reliability, energy saving, safety standards and ergonomic operation. These concepts are reflected throughout the line in its modularity, construction and numerous configurations. Thanks to its advance technology and premium performance, the EVO700 is a perfect solution for institutions with a limited footprint as well as restaurants needing to obtain the most from the kitchen space. The models detailed in this sheet are 3 gas solid tops with or without burners.



EVO700

GAS SOLID TOPS **ZANUSSI** PROFESSIONAL

FUNCTIONAL AND CONSTRUCTION FEATURES

- ◆ Single central burner with optimized combustion, maximum power 7 kW, with flame failure device and protected pilot light. Piezo ignition.
- ◆ Durable cast-iron cooking surface with differentiated temperature zones provides a maximum temperature in the center of 500°C and gradually decreases to 200°C at the perimeter to allow for different types cooking (fierce boiling at center – low simmering at perimeter).
- ◆ One piece pressed worktop in 1,5mm stainless steel with smooth, rounded corners.
- ◆ Front panel in stainless steel with Scotch Brite finish.
- ◆ All models have right-angled side edges to allow flush fitting between units, eliminating gaps and dirt traps.
- ◆ Pans can easily be moved from one area of the cooking surface to

- another without the need for lifting.
- ◆ Models with burners feature high-efficiency flower flame burners which allow the flame to be precisely regulated and to provide the proper amount of heat to pots and pans of different sizes (from a minimum of 10cm in diameter to a maximum of 40cm diameter).
- ◆ Each burner has:
 - 5,5 kW (with continuous flame regulation from 1,1 kW to 5,5 kW)
 - Flame failure device to protect against accidental extinguishing of the flame.

- Protected pilot light.
- ◆ The special design of the control knobs and bezels guarantees against water infiltration.
- ◆ Main connections can be from the rear of the unit.
- ◆ All gas appliances are supplied for use with natural gas or LPG. Conversion jets supplied as standard.
- ◆ Access to all components from the front.
- ◆ Provided with a service duct to facilitate installation and can be mounted on feet or castors.

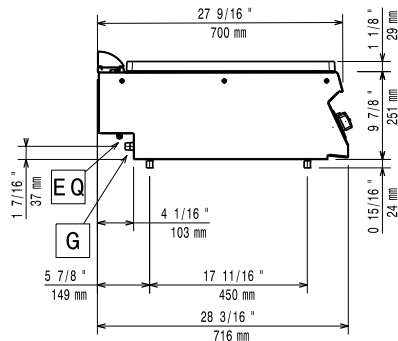
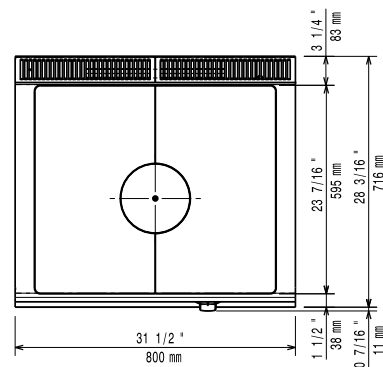
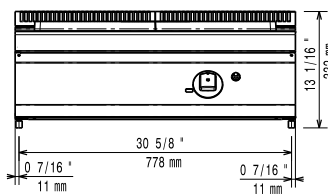
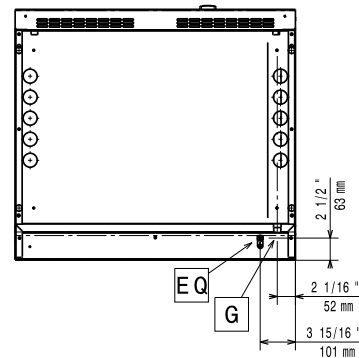
TECHNICAL DATA			
CHARACTERISTICS	MODELS		
	Z7STGH1000 372007	Z7STGH3000 372011	Z7STGL5000 372012
Power supply	Gas	Gas	Gas
External dimensions - mm			
width	800	800	1200
depth	700	700	700
height	250	250	250
height adjustment	50		
Solid top area - mm			
width	690	340	340
depth	590	590	595
Solid top heat input - kW	7	3.8	3.8
Back burner dimensions - mm		Ø 60	Ø 60, Ø 60
Back burners power - kW		5.5	5.5, 5.5
Front burners dimension - mm		Ø 60	Ø 60, Ø 60
Front burners power - kW		5.5	5.5, 5.5
Power - kW			
gas	7	14.6	25.6
Net weight - kg.	65	55	70

*In accordance with CE regulations for gas models belonging to Class B11 (power over 14 kW), it is necessary to install a chimney (if installed under a hood) or chimney and draft diverter if the waste gases are vented directly outside

OPTIONAL ACCESSORIES			
ACCESSORIES	MODELS		
	Z7STGH1000 372007	Z7STGH3000 372011	Z7STGL5000 372012
2 SIDE COVERING PANELS H=250-D=700-Z/OEM	206320	206320	206320
CHIMNEY COVER 800MM OPEN-LARGE CHIMNEY	206273		
CHIMNEY UPSTAND 800MM	206304	206304	
FLUE CONDENSER FOR 1 MODULE DIAM.150MM	206246		
FRONTAL HANDRAIL 1200 MM	206191	206191	206191
FRONTAL HANDRAIL 1600 MM	206192	206192	206192
FRONTAL HANDRAIL 800 MM	206167	206167	
LARGE HANDRAIL(PORIONING SHELF)400 MM	206185	206185	206185
LARGE HANDRAIL(PORIONING SHELF)800 MM	206186	206186	206186
MATCHING RING FOR FLUE CONDENSER 150DIAM	206133		
PRESSURE REGULATOR FOR GAS UNITS	927225	927225	927225
S/S GRID FOR DOUBLE BURNER-700 LINE		206297	206297
SIDE HANDRAIL-RIGHT/LEFT HAND-700 LINE	206240	206240	206240
SINGLE BURNER RADIANT PLATE - 700 LINE		206264	
SINGLE BURNER RIBBED PLATE - 700 LINE		206261	206261
SINGLE BURNER SMOOTH PLATE - 700 LINE		206260	206260
SUPPORT FOR "BRIDGE" SYSTEM 1000 MM	206138	206138	
SUPPORT FOR "BRIDGE" SYSTEM 1200 MM	206139	206139	206139
SUPPORT FOR "BRIDGE" SYSTEM 1400 MM	206140	206140	206140
SUPPORT FOR "BRIDGE" SYSTEM 1600 MM	206141	206141	206141
SUPPORT FOR "BRIDGE" SYSTEM 800 MM	206137	206137	
WATER COLUMN EXTENSION FOR 700 LINE	206291	206291	206291
WATER COLUMN WITH SWIVEL ARM	206289	206289	206289



www.zanussiprofessional.com



LEGEND

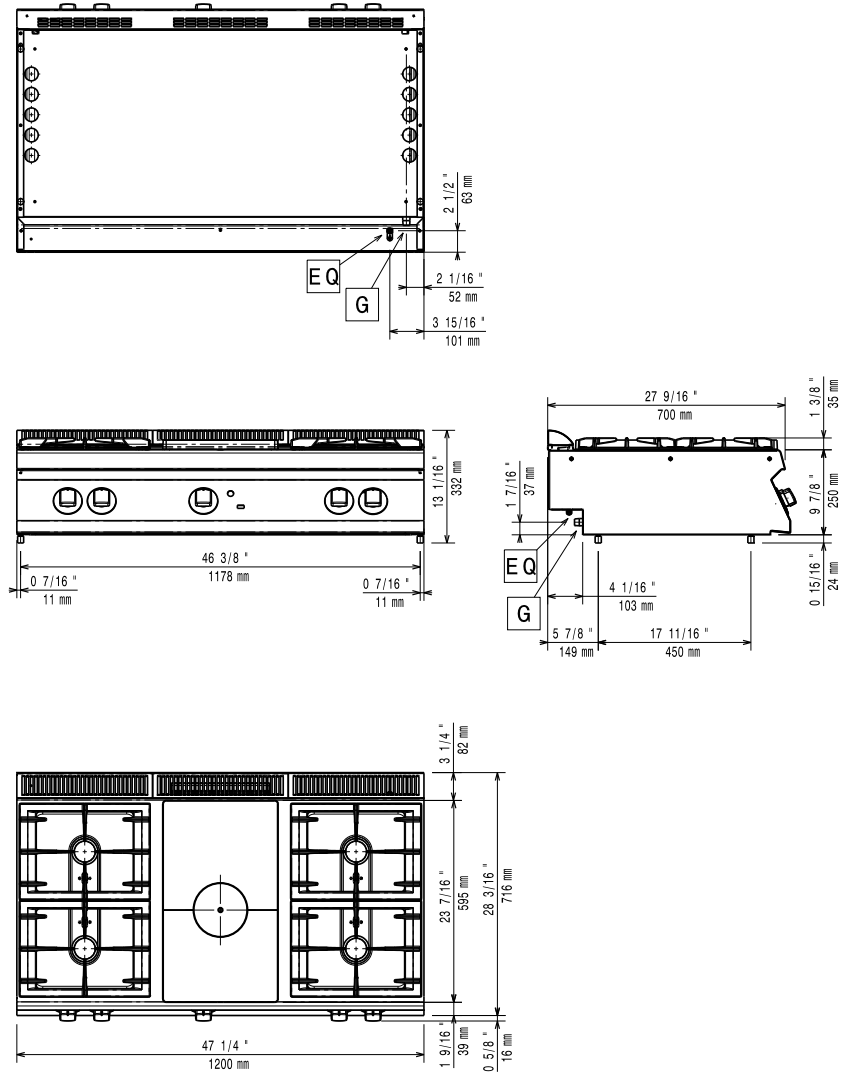
	Z7STGH1000 372007
G - Gas connection	1/2"



Z7STGH3000
372011

G - Gas connection

1/2"



LEGEND

	Z7STGL5000 372012
G - Gas connection	1/2"