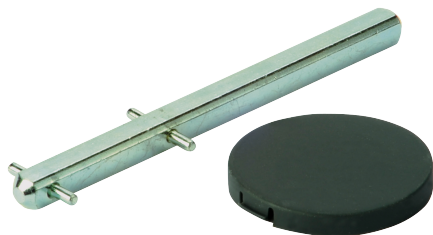


22993409

Door mounting kit compact design 3/4P



General characteristics

3 kits available:

- one for complete IP2X protection.
- one with compact design.
- one in steel for 6/8 P and 100/125 A.

Access to resources (ex: manuals)

This kit enables direct mounting on the door and right or left side of the panel with the standard switch.

No need to flip the connection terminals over to make them accessible. The external handle is quick and easy to install using a mounting nut on the inside of the enclosure.

Technical Characteristics

Weight [kg]	0.06
Model	Compact
Size	M1,M2
Type	Door Mounting Kit

Classification

UNSPSC	39122233
ETIM Class	EC002498
IGCC	5290

Commerce

Effective date	2007-12-12
Offer Life Cycle Code	40
Country of origin	CN

ETIM - Technical features

Type of accessory/spare part	Mounting set
Accessory	Yes
Spare part	No

Logistics

GTIN/EAN	3596031900831
Customs number	3926909790
Price unit	PC
Weight of the packing unit [kg]	0.06
Length of the packing unit [m]	0.055
Width of the packing unit [m]	0.15
Depth of the packing unit [m]	0.17