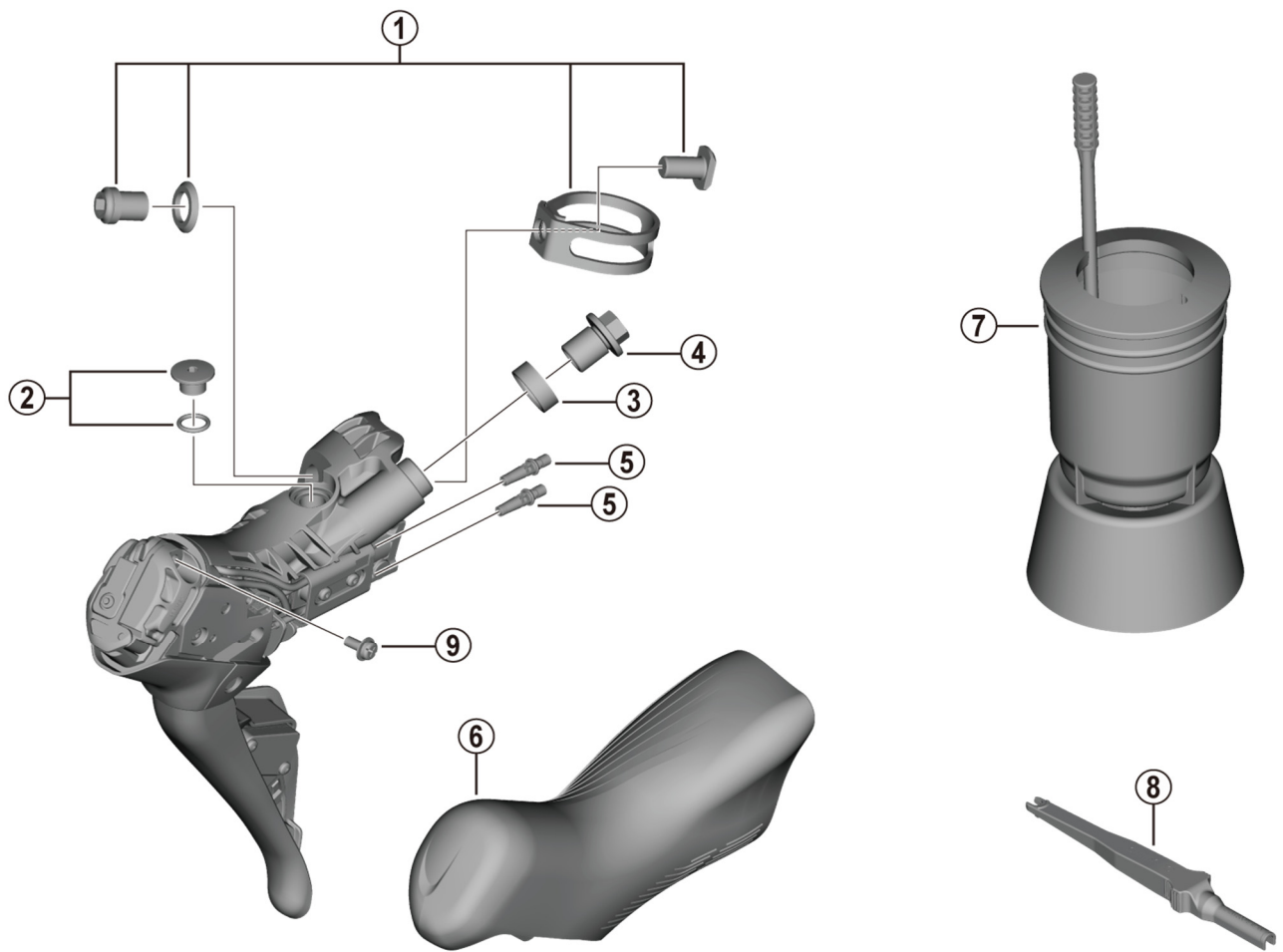


DURA-ACE Dual Control Lever (For Disc Brake)

# ST-R9270

(2x12-speed)



| ITEM NO. | SHIMANO CODE NO. | DESCRIPTION                               |
|----------|------------------|---|
| 1        | Y63X98050        | Clamp band unit diameter (23.8 - 24.2 mm) |
| 2        | Y0MX98020        | Bleed screw and O-ring                    |
| 3        | Y0C514000        | Joint support ring                        |
| 4        | Y8RD02000        | Flange flare nut (M9/Black)               |
| 5        | Y7HE30000        | Dummy plug                                |
| 6        | Y0MX98010        | Bracket covers (pair)                     |
| 7        | Y13000090        | TL-BR002 Funnel unit for M7 screw         |
| 8        | Y7HE40000        | TL-EW300 Plug tool                        |
| 9        | Y0MX40000        | Battery case screw                        |

Sep.-2021-4819

© Shimano Inc. I

Specifications are subject to change without notice.

**SHIMANO**

