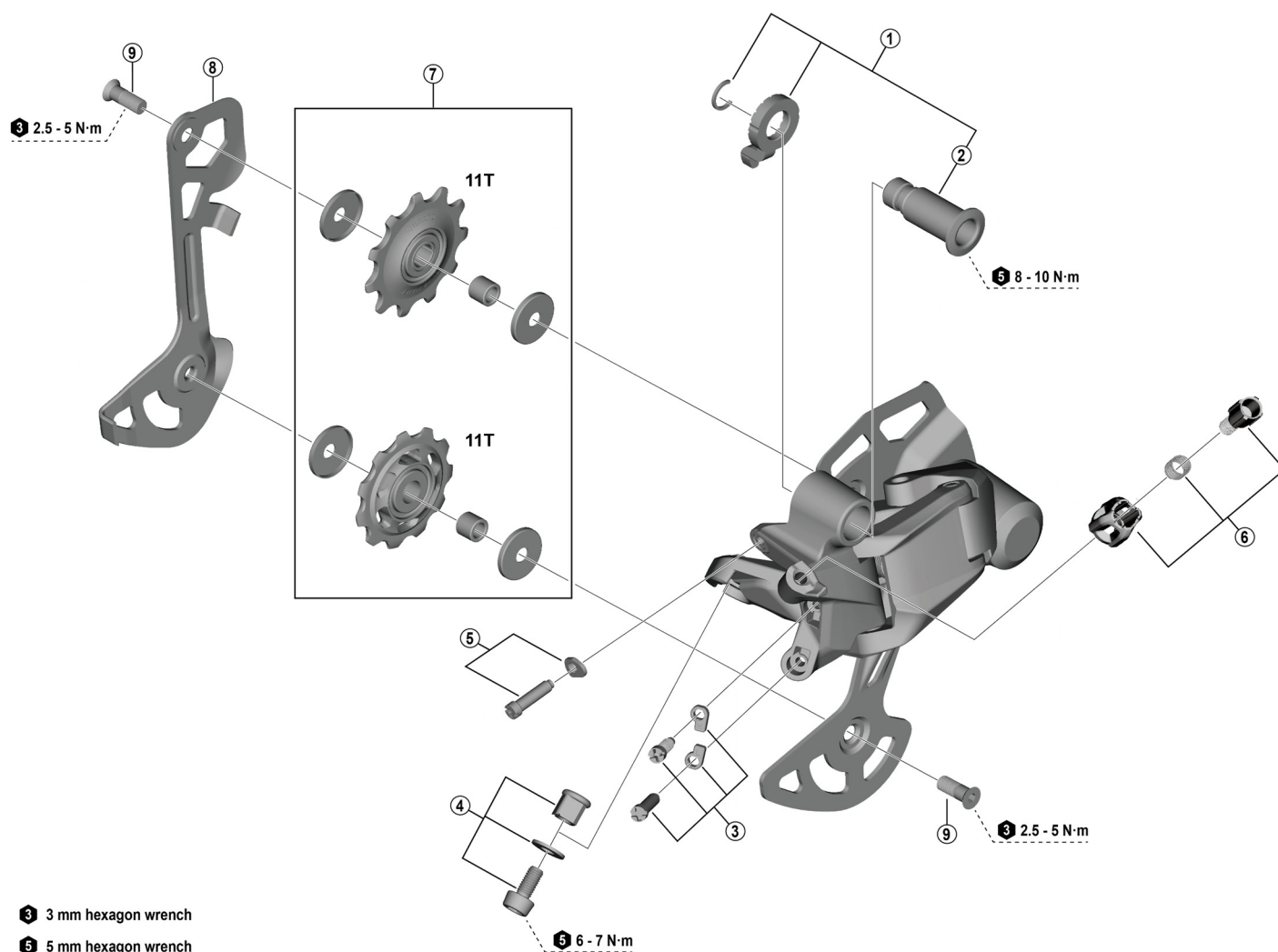


ESSA Rear Derailleur

RD-U2000-GS 8-speed



ITEM NO.	SHIMANO CODE NO.	DESCRIPTION	INTERCHANGEABILITY			
			RD-U8000	RD-U8020	RD-U4020	RD-U2000
1	Y3JD98010	Mounting screw unit (used for RD-U8000)	A			B
2	Y3JD9801T	Mounting screw (used for RD-U8000)	A			B
3	Y3JE98050	Stroke adjusting screws and plates (used for RD-U8020)		A	B	B
4	Y3K698010	Cable fixing bolt unit				A
5	Y3JD98050	End adjust screw and plate (used for RD-U8000)	A			B
6	Y3JD98070	Cable adjustment barrel unit (used for RD-U8000)	A	A	B	B
7	Y3JK98010	Tension and guide pulley set (used for RD-U4020)			A	B
8	Y3K69801T	Inner plate (GS)				A
9	Y3HM98080	Pulley screw (2 pcs.)	A	A	A	A

A: Same parts.

B: Parts are usable, but differ in materials, appearance, finish, size, etc.

Absence of mark indicates non-interchangeability.

Specifications are subject to change without notice.

Torque information is listed.

Sep.-2024-5034

© Shimano Inc. I

SHIMANO

