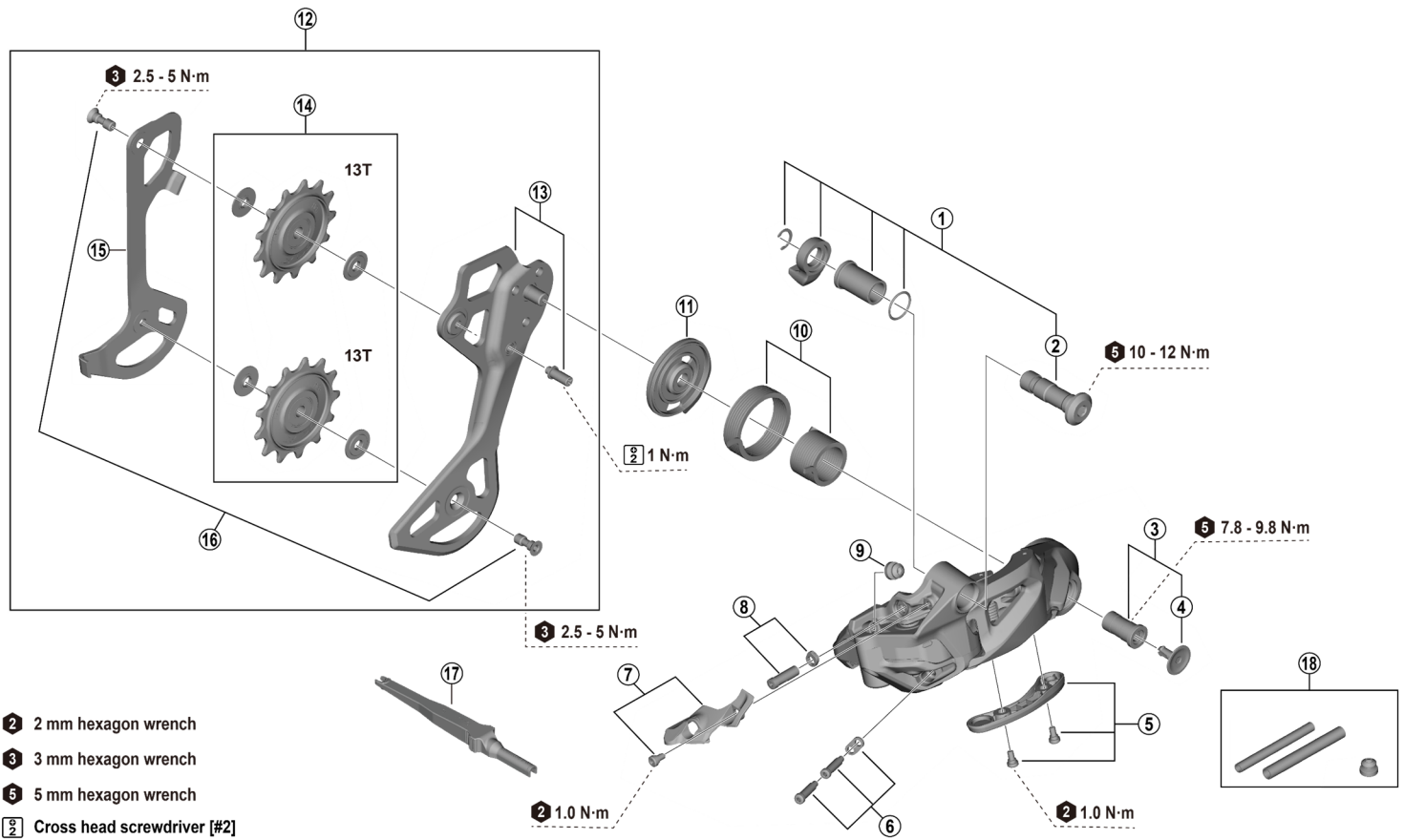


XTR Rear Derailleur

RD-M9260-12 12-speed**RD-M9260-11L** 11-speed

ITEM NO.	SHIMANO CODE NO.	DESCRIPTION	INTERCHANGEABILITY		
1	Y3K798010	B-axle unit	A		
2	Y3K79801T	B-axle	A		
3	Y3K798020	Plate axle and cap	A		
4	Y3K79803T	Plate axle cap	A		
5	Y3K898010	Outer link bumper and fixing screws			
6	Y3K798040	Stroke adjusting screws and plate	A		
7	Y3K898020	Cable cover and fixing screw			
8	Y3K798060	End adjust screw and plate	A		
9	Y3KR9801T	Plug cover	A		
10	Y3K798070	Plate tension spring unit	A		
11	Y3K79805T	Plate bumper	A		
12	Y3K798090	Plate unit (SGS) for RD-M9260-12	A		
	Y3K998010	Plate unit (SGS) for RD-M9260-11L			
13	Y3K798110	Outer plate assembly (SGS)	A		
14	Y3K798120	Pulley set for RD-M9260-12	A		
	Y3K998020	Pulley set for RD-M9260-11L			
15	Y3K79807T	Inner plate (SGS)	A		
16	Y5XX98130	Pulley screw (2 pcs.)	A		
17	Y7HE40000	TL-EW300 Plug tool			
18	Y3K898030	Protective sleeve set (dia. 4.8 and dia. 6) with plug cover			

A: Same parts.

B: Parts are usable, but differ in materials, appearance, finish, size, etc.

Absence of mark indicates non-interchangeability.

Specifications are subject to change without notice.

Torque information is listed.

Jul.-2025-5065A

© Shimano Inc. I

SHIMANO

quefairedemesdechets.fr