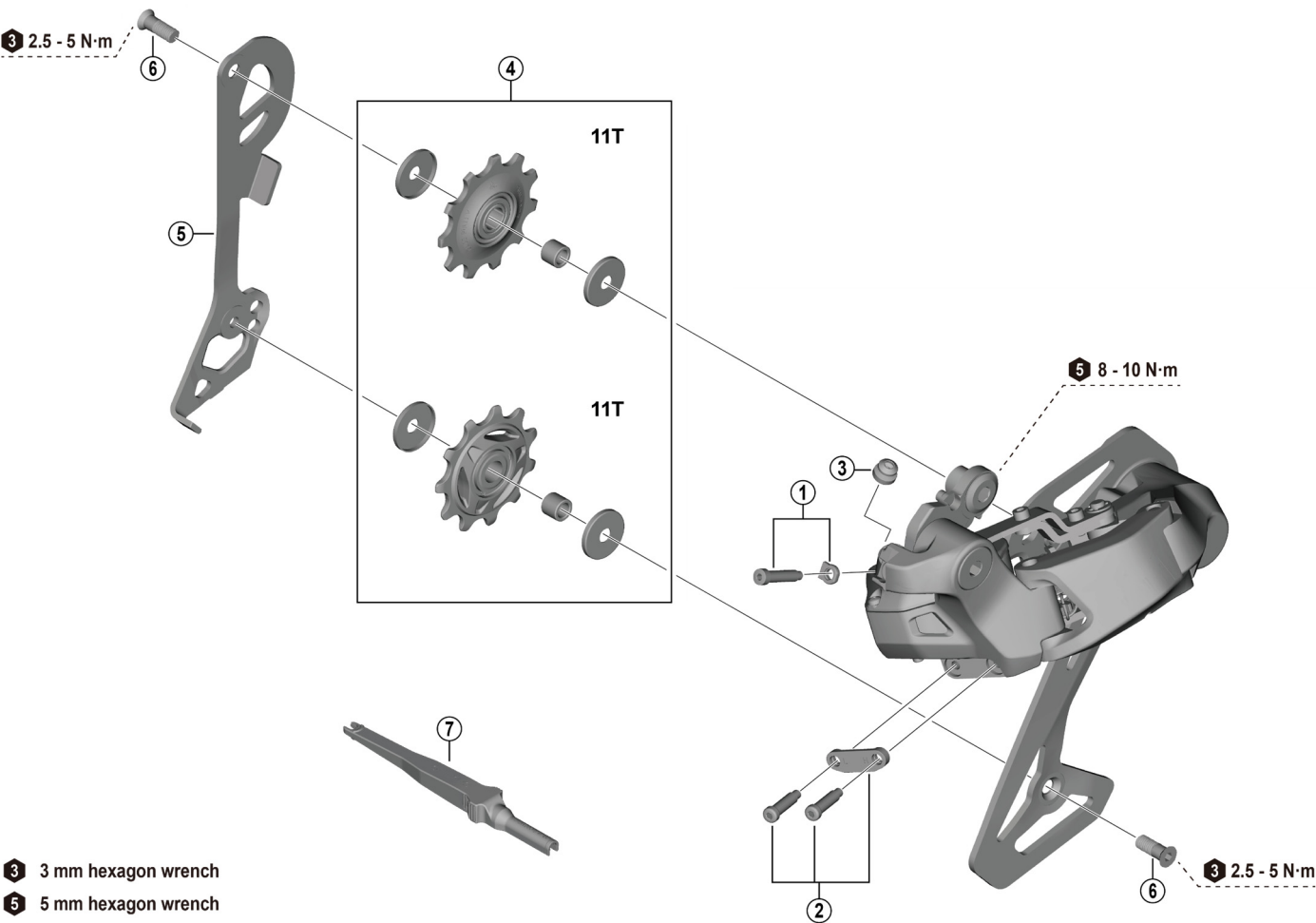


CUES Rear Derailleur

RD-U8050-SGS (11/10-speed)

RD-U8050-GS (10-speed)



- 3 3 mm hexagon wrench
- 5 5 mm hexagon wrench

RD-U8050-GS/10-speed

ITEM NO.	SHIMANO CODE NO.	DESCRIPTION	INTERCHANGEABILITY		
1	Y3JB98020	End adjusting screw and plate	A		
2	Y3JB98030	Stroke adjusting screws and plate	A		
3	Y3KR9801T	Boot			
4	Y3JB98010	Tension and guide pulley set	A		
5	Y3KP9801T	Inner plate (SGS)			
	Y3KR9802T	Inner plate (GS)			
6	Y3HM98080	Pulley screw (2 pcs.)	A		
7	Y7HE40000	TL-EW300 Plug tool			

A: Same parts.

B: Parts are usable, but differ in materials, appearance, finish, size, etc.

Absence of mark indicates non-interchangeability.

Jun.-2024-5086

© Shimano Inc. I

Specifications are subject to change without notice.

Torque information is listed.

SHIMANO

