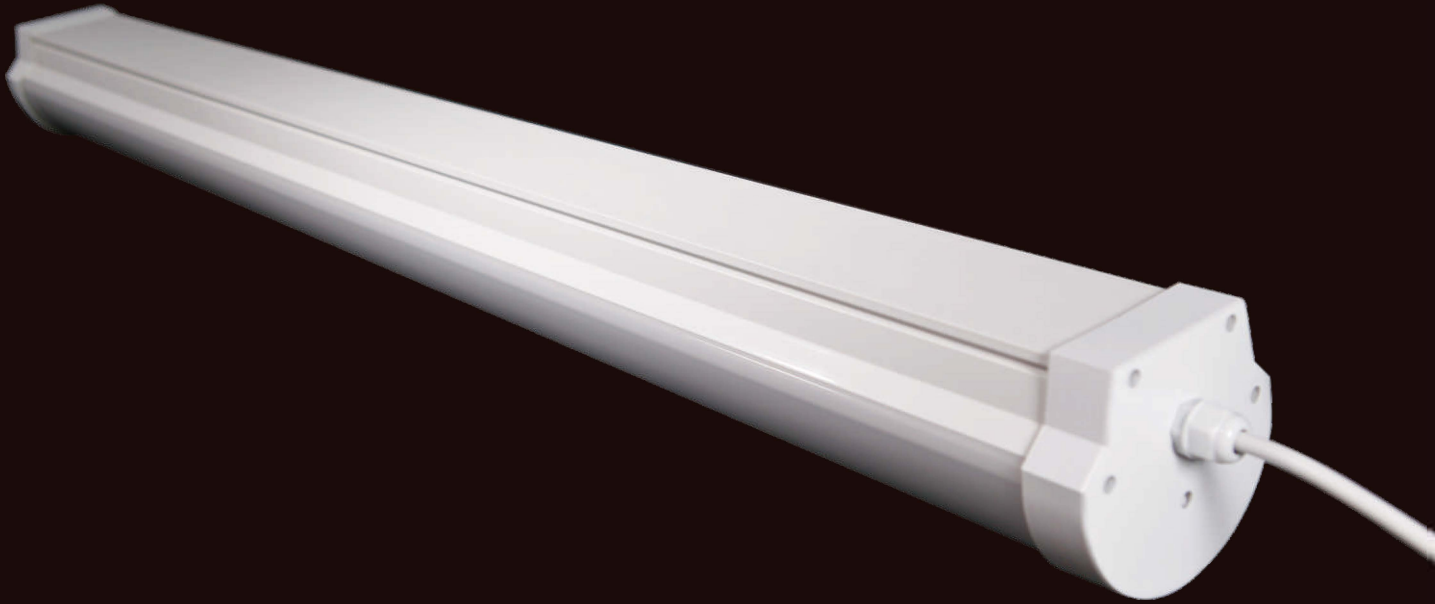




180° BEAM ANGLE IP65 LED TRI-PROOF LIGHT



180° BEAM ANGLE IP65 LED TRI-PROOF LIGHT

Features

IP65 Waterproof Dustproof Vandal-proof
 Private streamline design makes up elegant configuration and even light distribution
 Multi-functions optional with Dimming Microwave sensor Emergency Linked in serial
 High light efficiency 130lm/W with 5 years warranty
 180° wide beam angle for universal applications
 Indoor or semi-Outdoor Use for Commercial & Industrial Lighting

Specifications for 130lm/W

| Model No. | 1P-AQ3020 | 1P-AQ3030 | 1P-AQ3040 | 1P-AQ3050 | 1P-AQ3060 | 1P-AQ3080 | 1P-AQ3100 |
|------------------------|--|---------------|----------------|----------------|----------------|----------------|----------------|
| Power | 20W | 30W | 40W | 50W | 60W | 80W | 100W |
| Product Size | 600*110*101mm | 600*110*101mm | 1200*110*101mm | 1200*110*101mm | 1200*110*101mm | 1500*110*101mm | 1500*110*101mm |
| LED Chip | SMD2835 | SMD2835 | SMD2835 | SMD2835 | SMD2835 | SMD2835 | SMD2835 |
| Input Voltage | AC85-265V | AC85-265V | AC85-265V | AC85-265V | AC85-265V | AC85-265V | AC85-265V |
| Frequency | 50/60Hz | 50/60Hz | 50/60Hz | 50/60Hz | 50/60Hz | 50/60Hz | 50/60Hz |
| PF | 0.9 | 0.9 | 0.9 | 0.9 | 0.9 | 0.9 | 0.9 |
| Efficiency | 130lm/w | 130lm/w | 130lm/w | 130lm/w | 130lm/w | 130lm/w | 130lm/w |
| LED Luminous Flux | 2600lm(CW) | 3900lm(CW) | 5200lm(CW) | 6500lm(CW) | 7800lm(CW) | 10400lm(CW) | 13000lm(CW) |
| | 2560lm(NW) | 3860lm(NW) | 5160lm(NW) | 6460lm(NW) | 7760lm(NW) | 10360lm(NW) | 12960lm(NW) |
| | 2500lm(WW) | 3800lm(WW) | 5100lm(WW) | 6400lm(WW) | 7700lm(WW) | 10300lm(WW) | 12900lm(WW) |
| CCT | 5800-6100K(CW), 4800-5100K(CW), 3800-4200K(NW), 2800-3150K(WW) | | | | | | |
| CRI | Ra>80 | | | | | | |
| LED Node Temperature | 55°C | | | | | | |
| Operation Temperature | -20-45°C | | | | | | |
| Storage Temperature | -25-50°C | | | | | | |
| IP Grade | IP65 | | | | | | |
| Color Tolerance | 5SDCM | | | | | | |
| LED Lifespan | 50,000Hours | | | | | | |
| Driver | Build-in | | | | | | |
| Beam Angle | 180° | | | | | | |
| Multi-functions | Dimming, Emergency, Microwave sensor, Linked in serial | | | | | | |
| Installation Available | Surface mounted or Suspended installation | | | | | | |
| Certificates | CE & RoHS | | | | | | |

Applications

