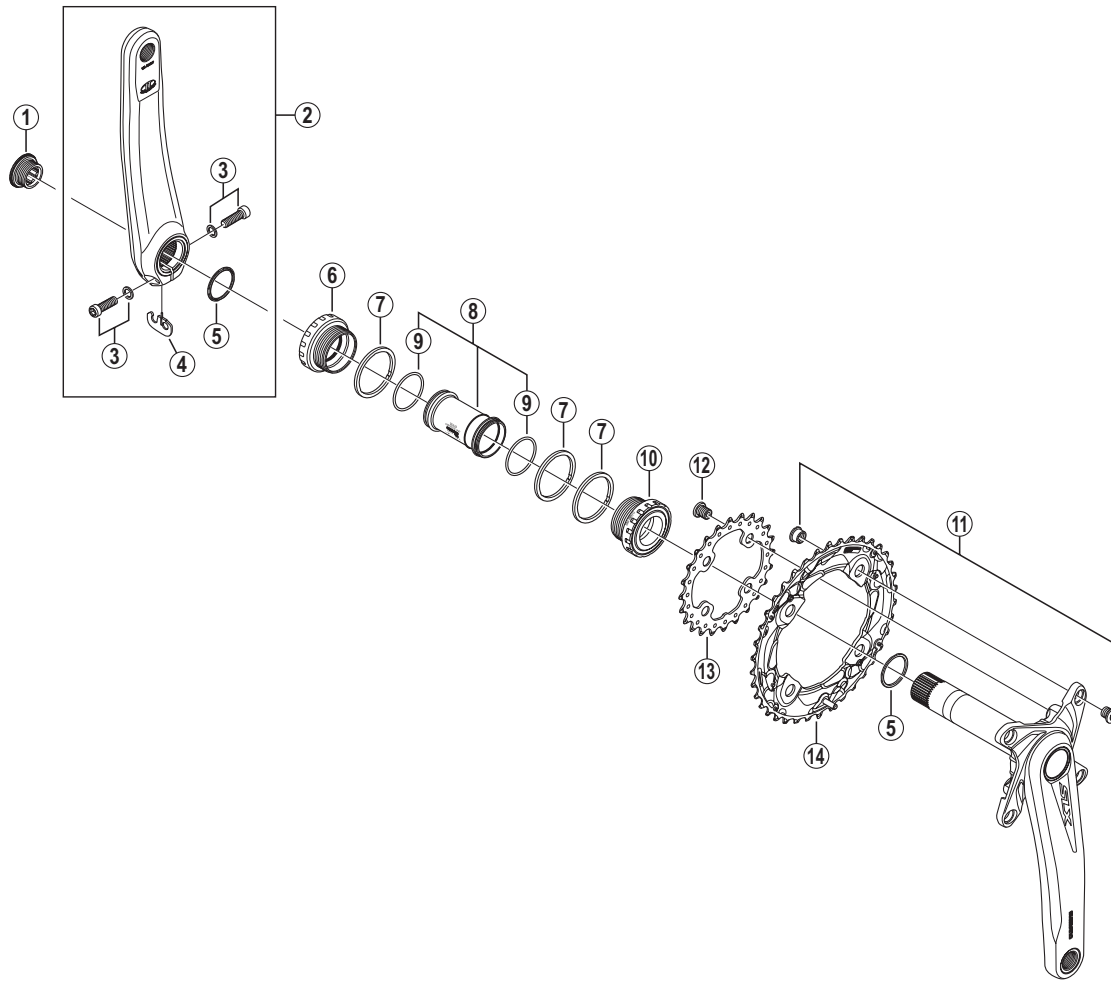


# SHIMANO SLX Front Chainwheel FC-M675



- Chaining teeth combinations: 38-24T(AM) / 38-26T (AK) / 40-28T (AJ)
- Bolt circle diameter: 104 mm...(For outer gear), 64 mm...(For inner gear)

FC-M785  
FC-M685

ITEM NO.	SHIMANO CODE NO.	DESCRIPTION	INTERCHANGEABILITY
1	Y1F811100	Crank Arm Fixing Bolt	A A
2	Y1N998010	Left Hand Crank Arm 170 mm	B B
	Y1N998020	Left Hand Crank Arm 175 mm	B B
3	Y1KS98030	Clamp Bolt (M6 x 19) & Washer	A B
4	Y1FU98120	Plate	A A
5	Y1F316000	Ring	A A
6	Y1J198080	Left Hand Adapter (B.C.1.37" x 24T) English Thread (SM-BB70)	A A
7	Y1F813000	Spacer (2.5 mm)	A A
8	Y1E598210	Inner Cover & O-Ring	A A
9	Y1TF21000	O-Ring	A A
10	Y1J198090	Right Hand Adapter (B.C.1.37" x 24T) English Thread (SM-BB70)	A A
11	Y1NA98010	Outer Gear Fixing Bolt (TORX®**/M8 x 7) & Nut (4 sets)	B
12	Y1MM98100	Inner Gear Fixing Bolt (TORX®**/M8 x 8.5 / 4 pcs.)	A B
13	Y1NA24000	Chainring 24T-AM	B
	Y1NA26000	Chainring 26T-AK	B
	Y1NA28000	Chainring 28T-AJ	B
14	Y1NA98020	Chainring 38T-AM	B
	Y1NA98030	Chainring 38T-AK	B
	Y1NA98040	Chainring 40T-AJ	B

A: Same parts.

B: Parts are usable, but differ in materials, appearance, finish, size, etc.

Absence of mark indicates non-interchangeability.

Jun.-2012-3397  
© Shimano Inc. I

\*\* TORX is a registered trademark of Camcar LLC.

Specifications are subject to change without notice.

# SHIMANO