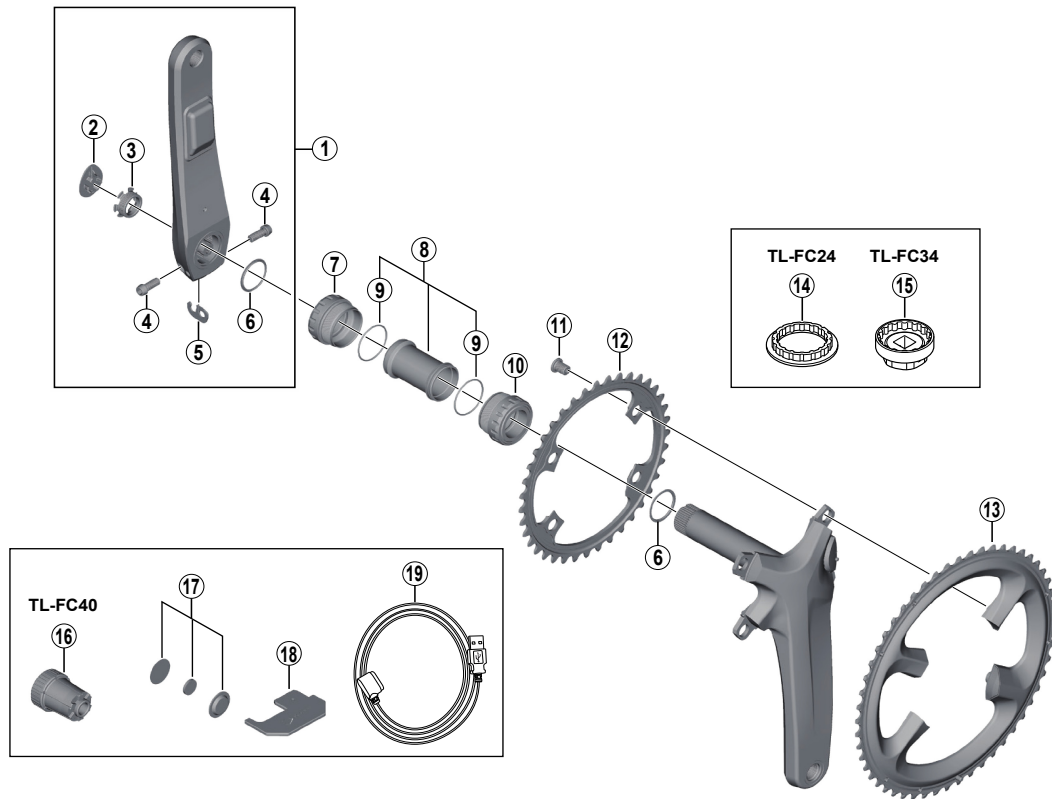


DURA-ACE Crankset

FC-R9100-P

BB-R9100



- Chaining teeth combinations: 50-34T/52-36T/53-39T
- Bolt circle diameter: 110 mm

ITEM NO.	SHIMANO CODE NO.	DESCRIPTION
1	Y1VU98010	Left Hand Crank Arm Unit 165 mm
	Y1VU98020	Left Hand Crank Arm Unit 167.5 mm
	Y1VU98030	Left Hand Crank Arm Unit 170 mm
	Y1VU98040	Left Hand Crank Arm Unit 172.5 mm
	Y1VU98050	Left Hand Crank Arm Unit 175 mm
	Y1VU98060	Left Hand Crank Arm Unit 177.5 mm
	Y1VU98070	Left Hand Crank Arm Unit 180 mm
2	Y1VU00025	Outer Cap
3	Y1VU00024	Left Crank Fixing Ring
4	Y1E512000	Clamp Bolt (M6 x 15)
5	Y1GE98050	Plate
6	Y1F316000	Ring
7	Y1VR98010	Left Hand Adapter (B.C.1.37" x 24T) English Thread (BB-R9100)
	Y1VR98020	Left Hand Adapter (M36 x 24T) Italian Thread (BB-R9100)
8	Y1KY98130	Inner Cover & O-Ring
9	Y1TF21000	O-Ring
10	Y1VR98030	Right Hand Adapter (B.C.1.37" x 24T) English Thread (BB-R9100)
	Y1VR98040	Right Hand Adapter (M36 x 24T) Italian Thread (BB-R9100)
11	Y1H598160	Gear Fixing Bolt (M8 x 10.1 / 1 Unit = 4 pcs.)
12	Y1VP34000	Chainring 34T-MS for 50-34T
	Y1VP36000	Chainring 36T-MT for 52-36T
	Y1VP39000	Chainring 39T-MW for 53-39T
13	Y1VP98010	Chainring 50T-MS for 50-34T
	Y1VP98020	Chainring 52T-MT for 52-36T
	Y1VP98030	Chainring 53T-MW for 53-39T
14	Y13009240	TL-FC24 Adapter Installation Tool
15	Y13009250	TL-FC34 Adapter Installation Tool
16	YEZY00017	TL-FC40 Left Hand Crank Arm Installation Tool
17	Y1VU98080	Magnet Set
18	Y1VU00030	Magnet Setting Tool
* 19	Y1VU00043	Charging Cable

Nov.-2017-4158A
© Shimano Inc. I

Specifications are subject to change without notice.

SHIMANO