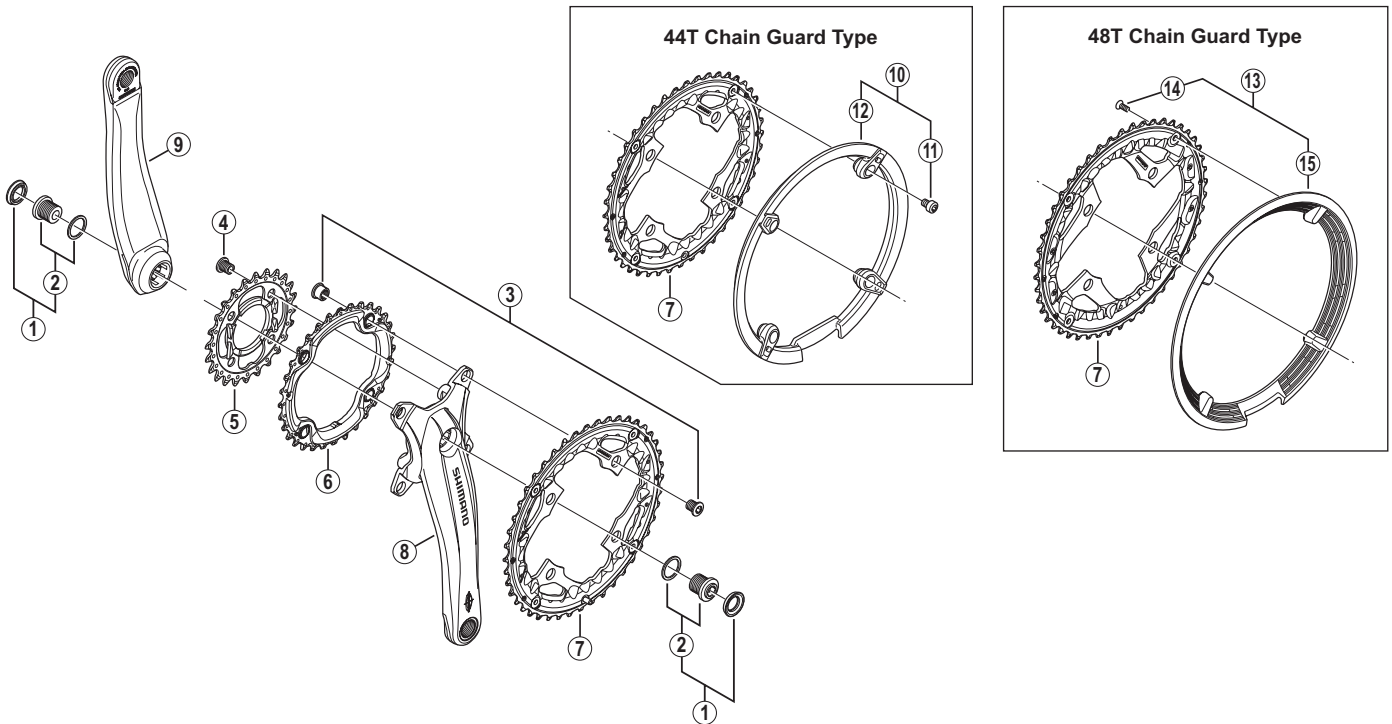


# Front Chainwheel FC-T521



- Chaining teeth combinations: 44-32-24T / 48-36-26T
- Bolt circle diameter: 104 mm...(For outer gear and middle gear), 64 mm...(For inner gear)

FC-T651  
FC-T611

ITEM NO.	SHIMANO CODE NO.	DESCRIPTION	INTERCHANGEABILITY	
			A	B
1	Y1M098010	Crank Arm Fixing Bolt Unit		
2	Y1M098020	Crank Arm Fixing Bolt & Washer		
3	Y1LV98070	44-32T Double Gear Fixing Bolt (M8 x 8.5) & Nut (4 sets)	A	A
	Y1NL98110	48-36T Double Gear Fixing Bolt (M8 x 8.5) & Nut (4 sets)		A
4	Y1LV98060	Inner Gear Fixing Bolt (M8 x 8.5 / 4 pcs.)	A	A
5	Y1N098010	Chaining 24T-AE (Black) & Chain Protector		
	Y1ME98030	Chaining 26T (Black) & Chain Protector		
6	Y1NL98010	Chaining 32T-AE (Black)	A	A
	Y1NL98020	Chaining 36T-AL (Black)	B	A
	Y1NL98030	Chaining 44T-AE (Black)	B	B
7	Y1NL98040	Chaining 44T-AE (Black) for Chain Guard	B	B
	Y1NL98050	Chaining 48T-AL (Black)	B	B
	Y1NL98060	Chaining 48T-AL (Black) for Chain Guard	B	B
8	Y1NL98070	Right Hand Crank Arm 170 mm (Silver)		
	Y1NL98080	Right Hand Crank Arm 170 mm (Black)		
	Y1NL98090	Right Hand Crank Arm 175 mm (Silver)		
	Y1NL98100	Right Hand Crank Arm 175 mm (Black)		
9	Y1N005100	Left Hand Crank Arm 170 mm (Silver)		
	Y1N005110	Left Hand Crank Arm 170 mm (Black)		
	Y1N003100	Left Hand Crank Arm 175 mm (Silver)		
	Y1N003110	Left Hand Crank Arm 175 mm (Black)		
10	Y1M098250	44T Chain Guard & Fixing Bolts	A	A
11	Y1M098260	44T Chain Guard Fixing Bolt (4 pcs.)	A	A
12	Y1GX14100	44T Chain Guard	A	A
13	Y1M298160	48T Chain Guard & Fixing Bolts	B	B
14	Y1D298010	48T Chain Guard Fixing Bolt (4 pcs.)	A	A
15	Y1LD12100	48T Chain Guard	B	B

A: Same parts.

B: Parts are usable, but differ in materials, appearance, finish, size, etc.

Absence of mark indicates non-interchangeability.

Jul.-2013-3550  
© Shimano Inc. I

Specifications are subject to change without notice.

# SHIMANO