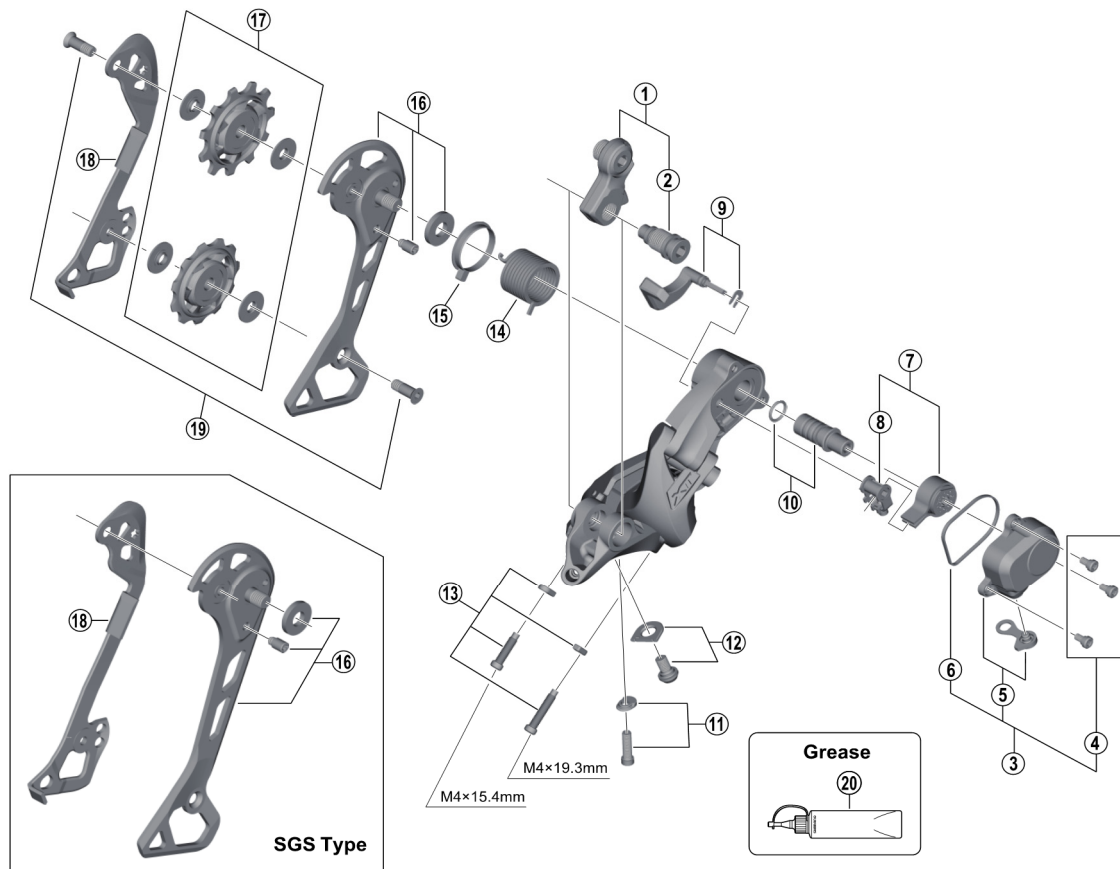


DEORE XT Rear Derailleur (11-speed)

RD-M8000 (GS/SGS)



ITEM NO.	SHIMANO CODE NO.	DESCRIPTION	RD-M9000		RD-M786	
			INTERCHANGEABILITY			
1	Y5RT98010	Bracket Axle Unit (for normal type)				
2	Y5RT26000	B-Axle 2 (for Direct Mount type)				
3	Y5RT98020	P-Cover Unit				
4	Y5Y198070	P-Cover Bolt Set (3 pcs.)	A		A	
5	Y5RT98150	P-Cover & Cap				
6	Y5RT16000	P-Cover Packing				
7	Y5PV98040	Stabilizer Unit	A			
8	Y5PV98050	Cam Unit	A			
9	Y5RT98030	Switch Lever Unit & Fixing Plate				
10	Y5PV98060	P-Axle & O-Ring	A			
11	Y5RT98050	End Adjust Bolt (M4 x 17.4) & Plate				
12	Y5RT98060	Cable Fixing Bolt (M5 x 9.2) & Plate				
13	Y5RT98070	Stroke Adjusting Screws & Plate				
14	Y5PV17000	P-Tension Spring	A			
15	Y5PV24000	P-Seal Ring	A			
16	Y5RT98080	Outer Plate Assembly (GS-Type)				
17	Y5RT98090	Outer Plate Assembly (SGS-Type)				
18	Y5RT98120	Guide & Tension Pulley Unit				
18	Y5RT09000	Inner Plate (GS-Type)				
18	Y5RT10000	Inner Plate (SGS-Type)				
19	Y5V598140	Pulley Bolt (2 pcs.)				A
* 20	Y04121000	New Grease for Stabilizer (Net. 50g)	A		A	
	Y04120800	Grease for Stabilizer (Net. 100g)	A		A	

A: Same parts.

B: Parts are usable, but differ in materials, appearance, finish, size, etc.

Absence of mark indicates non-interchangeability.

Specifications are subject to change without notice.

Aug.-2018-3859B

© Shimano Inc. I

SHIMANO