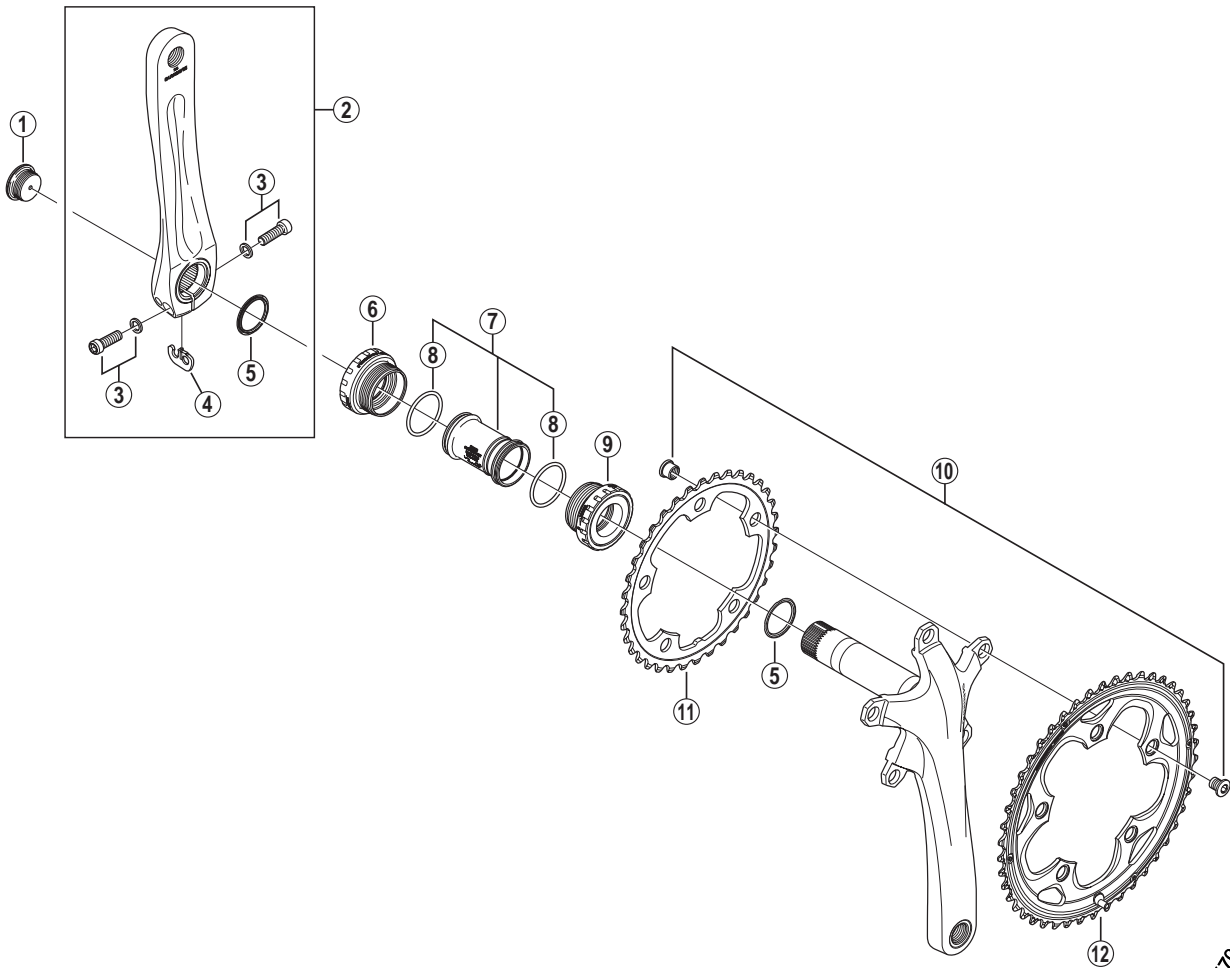


# CYCLOCROSS Front Chainwheel

## FC-CX50



• Bolt circle diameter: 110 mm

ITEM NO.	SHIMANO CODE NO.	DESCRIPTION	INTERCHANGEABILITY	
			FC-CX70	FC-4650
1	Y1KS13000	Crank Arm Fixing Bolt	A	A
2	Y1MS98010	Left Hand Crank Arm 170 mm (Silver)	B	B
	Y1MS98020	Left Hand Crank Arm 170 mm (Black)	B	B
	Y1MS98030	Left Hand Crank Arm 175 mm (Silver)	B	B
	Y1MS98040	Left Hand Crank Arm 175 mm (Black)	B	B
3	Y1KS98030	Clamp Bolt (M6 x 19) & Washer	A	A
4	Y1GE98050	Plate	A	A
5	Y1F316000	Ring	A	A
6	Y1MH98050	Left Hand Adapter (B.C.1.37" x 24T) English Thread	B	A
	Y1MH98060	Left Hand Adapter (M36 x 24T) Italian Thread	B	A
7	Y1MH98070	Inner Cover & O-Ring	B	A
8	Y1TF21000	O-Ring	A	A
9	Y1MH98080	Right Hand Adapter (B.C.1.37" x 24T) English Thread	B	A
	Y1MH98090	Right Hand Adapter (M36 x 24T) Italian Thread	B	A
10	Y1HD98020	Gear Fixing Bolt (M8 x 8.5) & Nut (5 sets)	B	B
11	Y1MS36000	Chainring 36T (Silver)	B	
	Y1MS36010	Chainring 36T (Black)	B	
12	Y1MS98050	Chainring 46T-G (Silver)	B	
	Y1MS98060	Chainring 46T-G (Black)	B	

A: Same parts.

B: Parts are usable, but differ in materials, appearance, finish, size, etc.

Absence of mark indicates non-interchangeability.

Jul.-2011-3224

© Shimano Inc. I

Specifications are subject to change without notice.

# SHIMANO