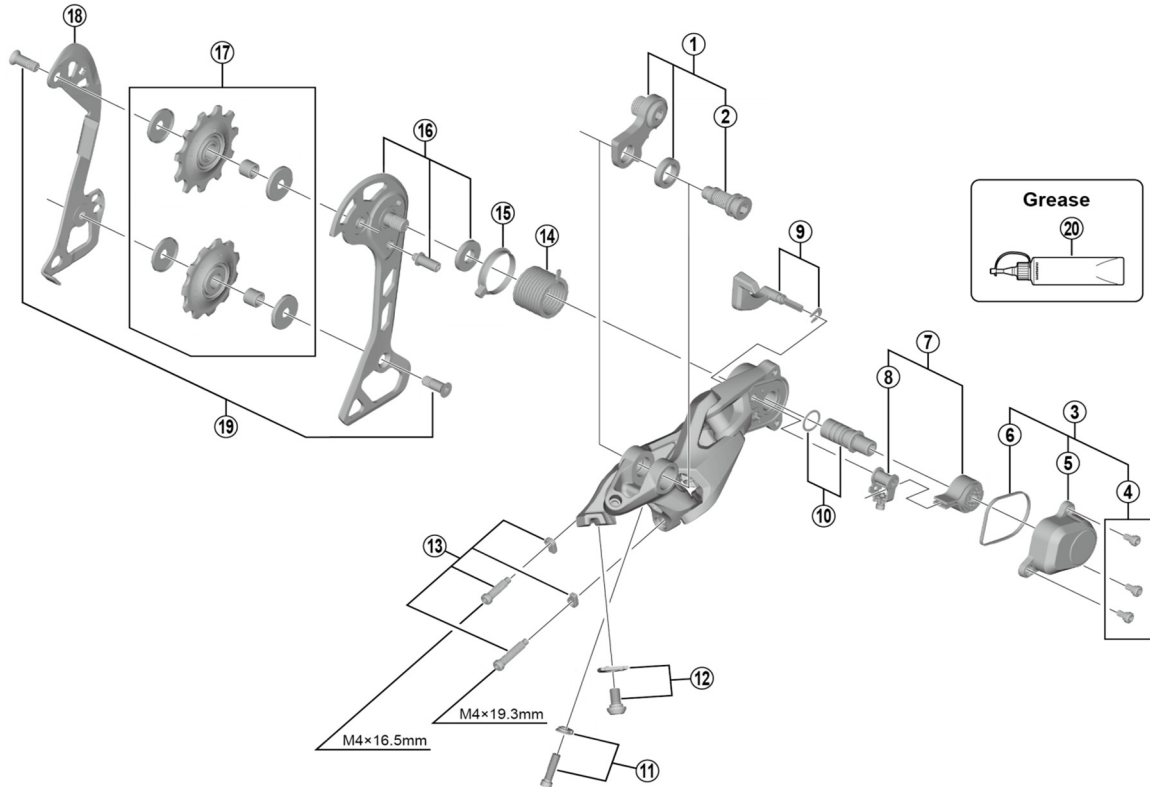


SLX Rear Derailleur (11-speed) RD-M7000-11 (GS)



ITEM NO.	SHIMANO CODE NO.	DESCRIPTION	INTERCHANGEABILITY
1	Y5YX98020	Bracket Axle Unit (for normal type)	B
2	Y5RT26000	B-Axle 2 (for Direct Mount type)	A
3	Y5YX98030	P-Cover Unit	
4	Y5Y198070	P-Cover Bolt Set (3 pcs.)	A
5	Y5YX41000	P-Cover	
6	Y5RT16000	P-Cover Packing	A
7	Y5PV98040	Stabilizer Unit	A
8	Y5PV98050	Cam Unit	A
9	Y5YX98040	Switch Lever Unit & Fixing Plate	A
10	Y5PV98060	P-Axle & O-Ring	A
11	Y5YX98050	End Adjust Bolt (M4 x 18) & Plate	A
12	Y5RT98060	Cable Fixing Bolt (M5 x 9.2) & Plate	A
13	Y5YX98060	Stroke Adjusting Screws & Plate	A
14	Y5PV17000	P-Tension Spring	A
15	Y5PV24000	P-Seal Ring	A
16	Y5YX98070	Outer Plate Assembly (GS)	
17	Y5RS98010	Tension & Guide Pulley Set	
18	Y5YX16000	Inner Plate (GS)	
19	Y50J98070	Pulley Bolt (M5 x 12) 2 pcs.	A
* 20	Y04121000	New Grease for Stabilizer (Net. 50g)	A
	Y04120800	Grease for Stabilizer (Net. 100g)	A

A: Same parts.

B: Parts are usable, but differ in materials, appearance, finish, size, etc.

Absence of mark indicates non-interchangeability.

Specifications are subject to change without notice.

Aug.-2018-4094A

© Shimano Inc. I

SHIMANO