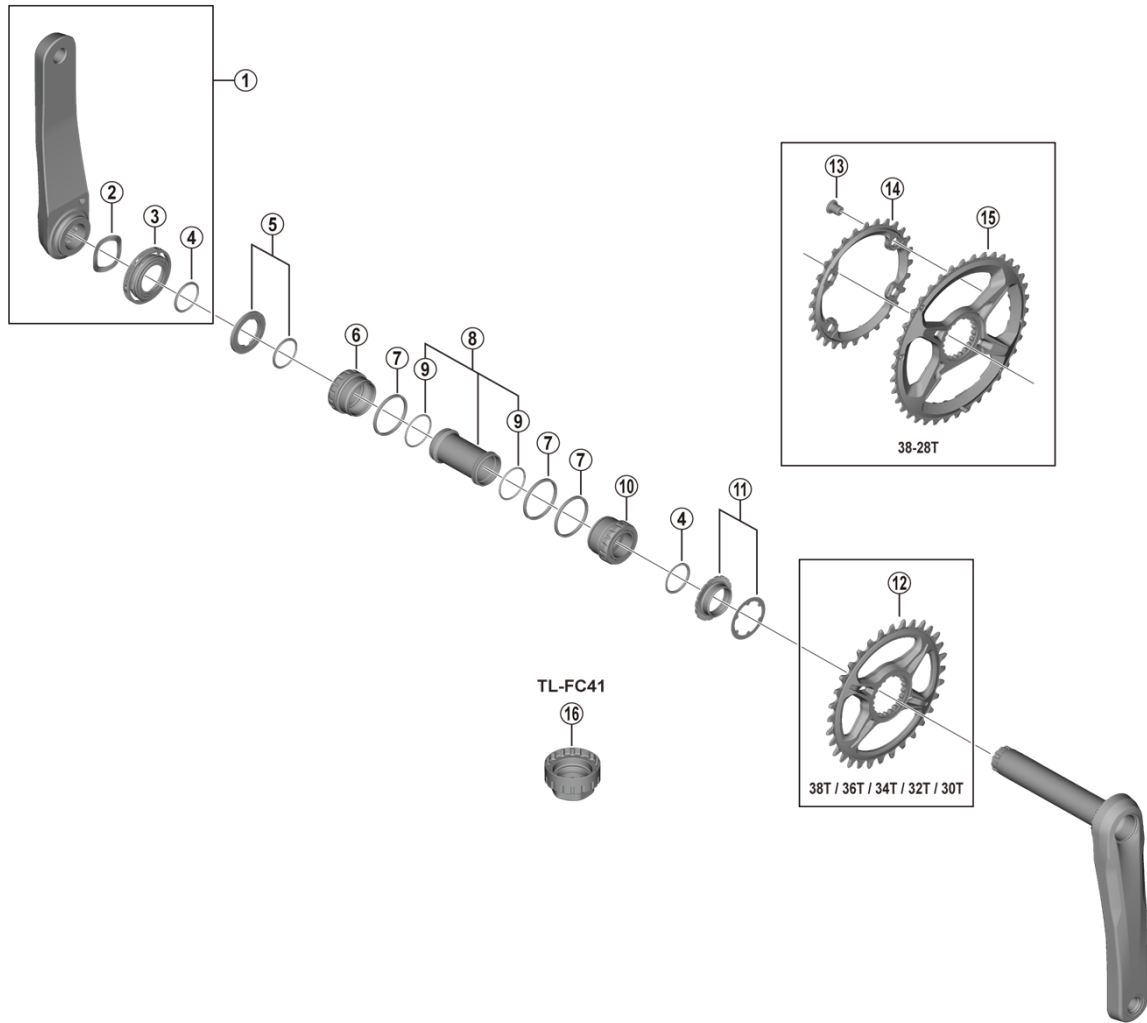


XTR Crankset  
**FC-M9120-1 FC-M9120-B2**  
**SM-BB93 SM-CRM95**



• Chaining teeth combinations: 38-28T / 38T / 36T / 34T / 32T / 30T

ITEM NO.	SHIMANO CODE NO.	DESCRIPTION
1	<b>Y1X098020</b>	Left Hand Crank Arm Unit 165 mm
	<b>Y1X098030</b>	Left Hand Crank Arm Unit 170 mm
	<b>Y1X098040</b>	Left Hand Crank Arm Unit 175 mm
2	<b>Y1X027000</b>	Wave Washer
3	<b>Y1X026000</b>	Adjust Nut
4	<b>Y1F316000</b>	Ring
5	<b>Y1PW98070</b>	Spacer & Ring
6	<b>Y1P898010</b>	Left Hand Adapter (B.C.1.37" x 24T) English Thread (SM-BB93)
7	<b>Y1P804000</b>	Spacer (2.5 mm)
8	<b>Y1LR98090</b>	Inner Cover & O-Ring
9	<b>Y1TF21000</b>	O-Ring
10	<b>Y1P898020</b>	Right Hand Adapter (B.C.1.37" x 24T) English Thread (SM-BB93)
11	<b>Y1X098050</b>	Lock Ring & Washer
12	<b>ISMCRM95A0</b>	Chainring 30T (SM-CRM95)
	<b>ISMCRM95A2</b>	Chainring 32T (SM-CRM95)
	<b>ISMCRM95A4</b>	Chainring 34T (SM-CRM95)
	<b>ISMCRM95A6</b>	Chainring 36T (SM-CRM95)
	<b>ISMCRM95A8</b>	Chainring 38T (SM-CRM95)
13	<b>Y1RL98060</b>	Gear Fixing Bolt (M8 x 9 / 1 Unit = 4 pcs.)
14	<b>Y1X228000</b>	Chainring 28T-BH for 38-28T
15	<b>Y0G898010</b>	Chainring 38T-BH for 38-28T
16	<b>Y13098720</b>	TL-FC41 Front Chaining Direct Mount Tool

Jul.-2019-4379A  
 © Shimano Inc. I

Specifications are subject to change without notice.

**SHIMANO**