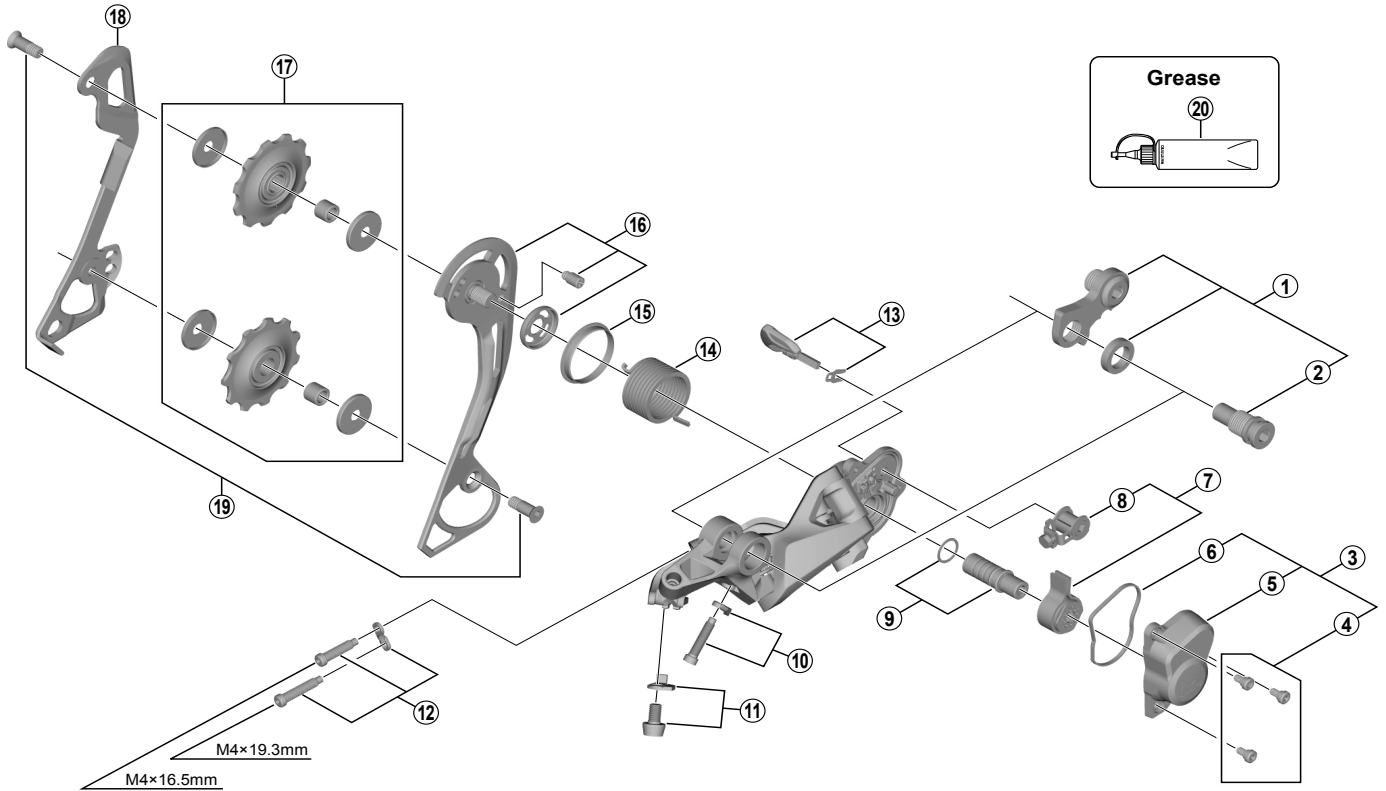


SLX Rear Derailleur (10-speed) RD-M7000-10 (SGS)



RD-M675-GS
RD-M675-SGS
RD-M670-GS
RD-M670-SGS

ITEM NO.	SHIMANO CODE NO.	DESCRIPTION	INTERCHANGEABILITY			
			RD-M675-GS	RD-M675-SGS	RD-M670-GS	RD-M670-SGS
1	Y5ZH98010	Bracket Axle Unit (for normal type)	A	A	A	A
2	Y50Y17000	B-Axle 2 (for Direct Mount type)	A	A	A	A
3	Y5ZH98020	P-Cover Unit				
4	Y5Y198070	P-Cover Screw Set (3 pcs.)	A	A		
5	Y5ZH51000	P-Cover				
6	Y5Y219000	P-Cover Packing	A	A		
* 7	Y3GE98060	Stabilizer Unit				
8	Y5Y198120	Cam Unit	A	A		
9	Y5Y198040	P-Axle Unit & Washer	A	A		
10	Y5ZH98030	End Adjust Screw (M4 x 18) & Plate	B	B	B	B
11	Y5W798030	Cable Fixing Screw (M5 x 8) & Plate	A	A	A	A
12	Y5ZH98040	Stroke Adjusting Screws & Plate	B	B	B	B
* 13	Y3E498070	Switch Lever Unit & Fixing Plate				
14	Y5XD19000	P-Tension Spring	A	A		
15	Y5XD15000	P-Seal Ring	A	A		
16	Y5ZH98050	Outer Plate Assembly (SGS)		A		
17	Y5XE98030	Tension & Guide Pulley Set	A	A	A	A
18	Y5Y010000	Inner Plate (SGS)		A		A
19	Y50J98070	Pulley Screw (M5 x 12) 2 pcs.	A	A		
20	Y04121000	New Grease for Stabilizer (Net. 50g)				
	Y04120800	Grease for Stabilizer (Net. 100g)	A	A		

A: Same parts.
B: Parts are usable, but differ in materials, appearance, finish, size, etc.
Absence of mark indicates non-interchangeability.
Specifications are subject to change without notice.