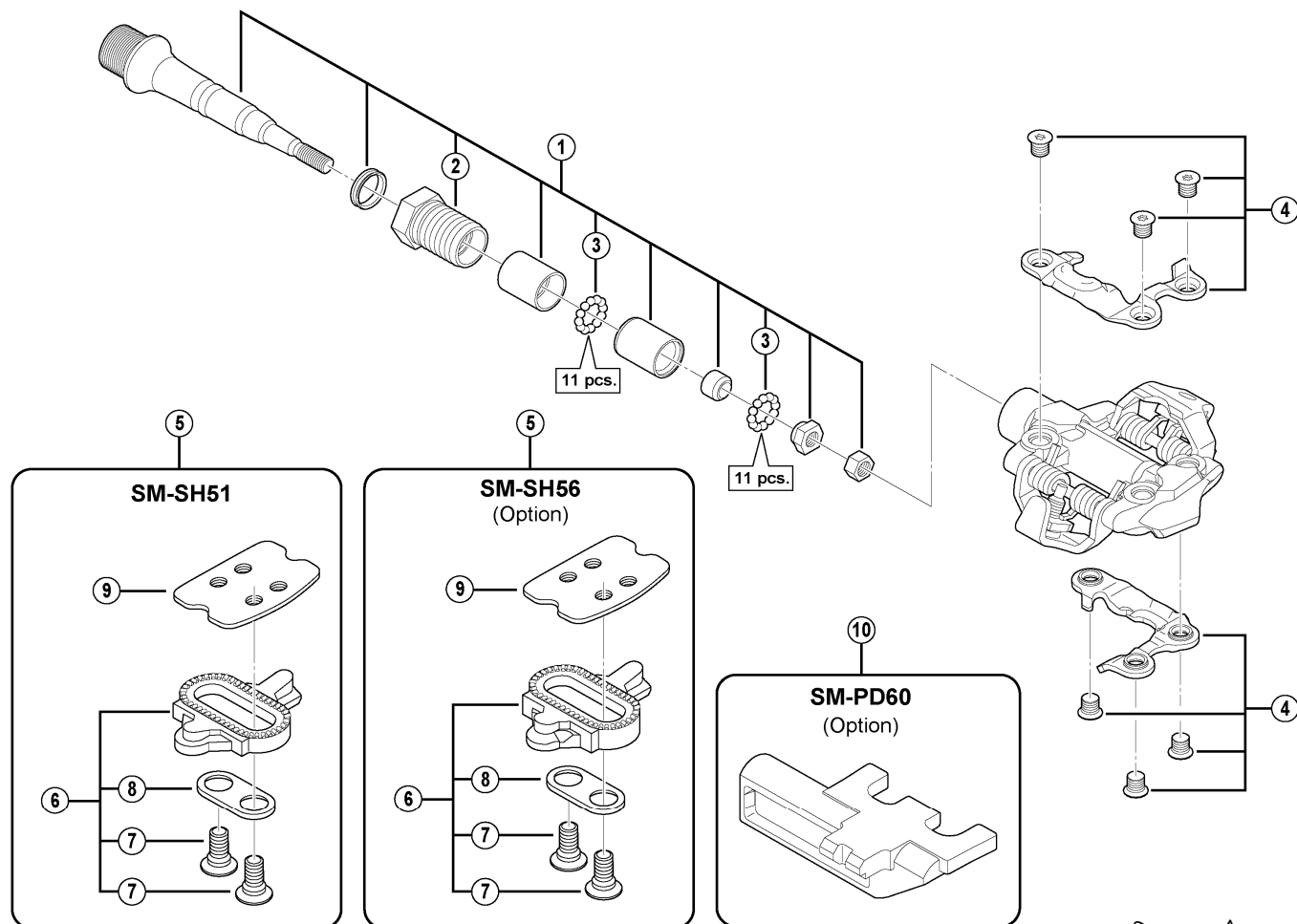


XTR SPD Pedals

PD-M980



ITEM NO.	SHIMANO CODE NO.	DESCRIPTION	INTERCHANGEABILITY		
* 1	Y46F98070	Pedal Axle Assembly (Right / B.C.9/16" x 20T.P.I.)			
	Y46F98020	Pedal Axle Assembly (Left / B.C.9/16" x 20T.P.I.)			
2	Y46F98030	Lock Bolt (Right)			
	Y46F98040	Lock Bolt (Left)			
3	Y41N98030	Steel Ball (3/32") 62 pcs.	A	A	
4	Y46F98050	Body Cover (Right) & Fixing Bolts (TORX [®] / M5)			
	Y46F98060	Body Cover (Left) & Fixing Bolts (TORX [®] / M5)			
5	Y42498200	SM-SH51 Cleat Set (Single Release Mode / Pair)	A	A	
	Y41S98090	SM-SH56 Cleat Set (Multiple Release Mode / Pair)	A	A	
6	Y42498201	SM-SH51 Cleat Set w/o Cleat Nut (Single Release Mode / Pair)	A	A	
	Y41S98100	SM-SH56 Cleat Set w/o Cleat Nut (Multiple Release Mode / Pair)	A	A	
7	Y41704030	Cleat Fixing Bolt (1 pc.)	A	A	
8	Y42423000	Cleat Adapter (1 pc.)	A	A	
9	Y40N01000	Cleat Nut (1 pc.)	A	A	
10	Y40Z98010	SM-PD60 Reflector Unit (Pair/Option)	A	A	
	Y40Z98020	SM-PD60 Reflector Unit (AS/Pair/Option)	A	A	

A: Same parts.

B: Parts are usable, but differ in materials, appearance, finish, size, etc.

Absence of mark indicates non-interchangeability.

** TORX is a registered trademark of Camcar LLC.

Feb.-2013-3069A

© Shimano Inc. A

Specifications are subject to change without notice.

SHIMANO