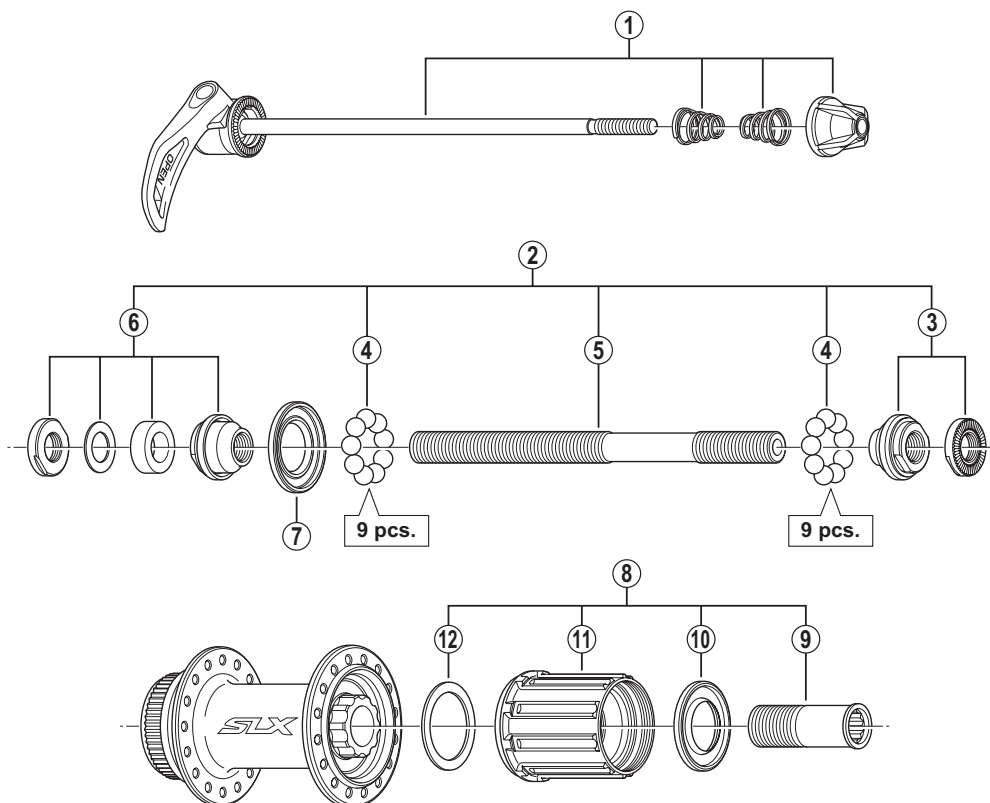


SHIMANO SLX Freehub (9/10-Speed)

FH-M675 For Disc Brake



• Over Lock Nut Dimension: 135 mm (5-5/16")

| ITEM NO. | SHIMANO CODE NO. | DESCRIPTION | INTERCHANGEABILITY | | |
|----------|------------------|--|--------------------|---------|---------|
| | | | FH-M595 | FH-M665 | FH-M629 |
| 1 | Y3D398010 | Complete Quick Release 168 mm (6-5/8") | A | A | A |
| | Y3D398020 | Complete Quick Release 173 mm (6-13/16") | A | A | A |
| 2 | Y3SY98010 | Complete Hub Axle 146 mm (5-3/4") | | A | A |
| 3 | Y3D398040 | Right Hand Lock Nut Unit | | A | A |
| 4 | Y00091310 | Steel Ball (1/4") 18 pcs. | A | A | A |
| 5 | Y30K01200 | Hub Axle M10 x 146 mm (5-3/4") | A | A | A |
| 6 | Y3SY98020 | Left Hand Lock Nut Unit | B | A | A |
| 7 | Y3CR09000 | Left Hand Seal Ring | A | A | A |
| 8 | Y3D398070 | Complete Freewheel Body | | A | A |
| 9 | Y3D310000 | Body Fixing Bolt | | A | A |
| 10 | Y3CR08000 | Right Hand Seal Ring | A | A | A |
| 11 | Y3D398080 | Freewheel Body Unit | | A | A |
| 12 | Y37504000 | Freewheel Body Washer | B | A | A |

A: Same parts.

B: Parts are usable, but differ in materials, appearance, finish, size, etc.

Absence of mark indicates non-interchangeability.

Jun.-2012-3402A

© Shimano Inc. I

Specifications are subject to change without notice.

SHIMANO