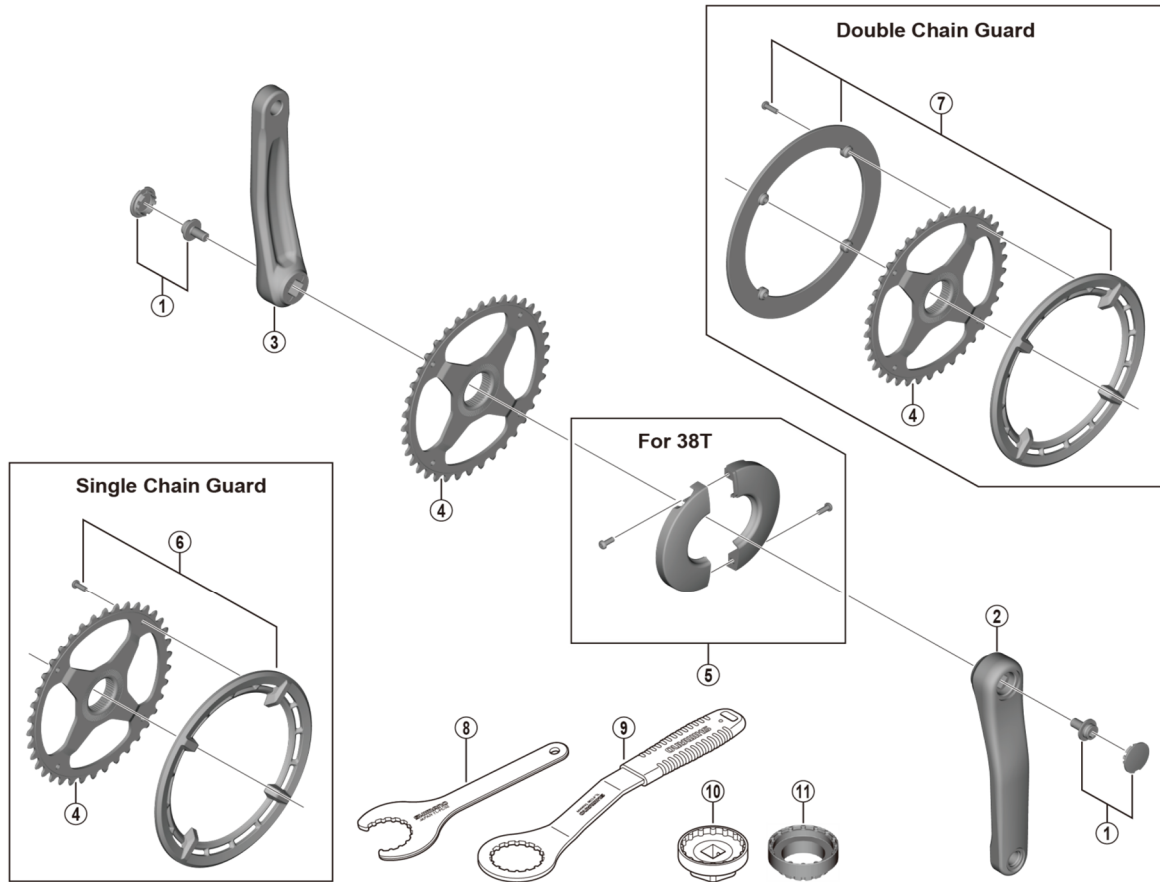


# E5000 Series Crankset

## FC-E5000    FC-E5010

### SM-CRE50



FC-E6000

ITEM NO.	SHIMANO CODE NO.	DESCRIPTION	INTERCHANGEABILITY
1	Y0GC98010	Crank Arm Fixing Bolt & Cap for FC-E5000	B
	Y0GD98010	Crank Arm Fixing Bolt & Cap for FC-E5010	B
2	Y0GC07000	Right Hand Crank Arm Unit 165 mm for FC-E5000	
	Y0GC05000	Right Hand Crank Arm Unit 170 mm for FC-E5000	
	Y0GC03000	Right Hand Crank Arm Unit 175 mm for FC-E5000	
	Y0GD07010	Right Hand Crank Arm Unit 165 mm for FC-E5010	
	Y0GD05010	Right Hand Crank Arm Unit 170 mm for FC-E5010	
	Y0GD03010	Right Hand Crank Arm Unit 175 mm for FC-E5010	
	3	Y0GC07100	Left Hand Crank Arm Unit 165 mm for FC-E5000
Y0GC05100		Left Hand Crank Arm Unit 170 mm for FC-E5000	
Y0GC03100		Left Hand Crank Arm Unit 175 mm for FC-E5000	
Y0GD07110		Left Hand Crank Arm Unit 165 mm for FC-E5010	
Y0GD05110		Left Hand Crank Arm Unit 170 mm for FC-E5010	
4	Y0GD03110	Left Hand Crank Arm Unit 175 mm for FC-E5010	
	Y0J338000	Chainring 38T (SM-CRE50)	
	Y0J344000	Chainring 44T (SM-CRE50)	
5	Y0J398010	38T Cover & Fixing Bolt	
	Y0J398020	38T Single Chain Guard Unit	
6	Y0J398030	44T Single Chain Guard Unit	
	Y0J398040	38T Double Chain Guard Unit	
7	Y0J398050	44T Double Chain Guard Unit	
	Y13009210	TL-FC32 Adapter Tool	A
9	Y13098000	TL-FC36 Adapter Tool	A
10	Y13009230	TL-FC33 Adapter Tool	A
11	YEZY00016	TL-FC39 FC Installation Tool	A

A: Same parts.

B: Parts are usable, but differ in materials, appearance, finish, size, etc.

Absence of mark indicates non-interchangeability.

Specifications are subject to change without notice.

Dec.-2018-4499

© Shimano Inc. I

# SHIMANO