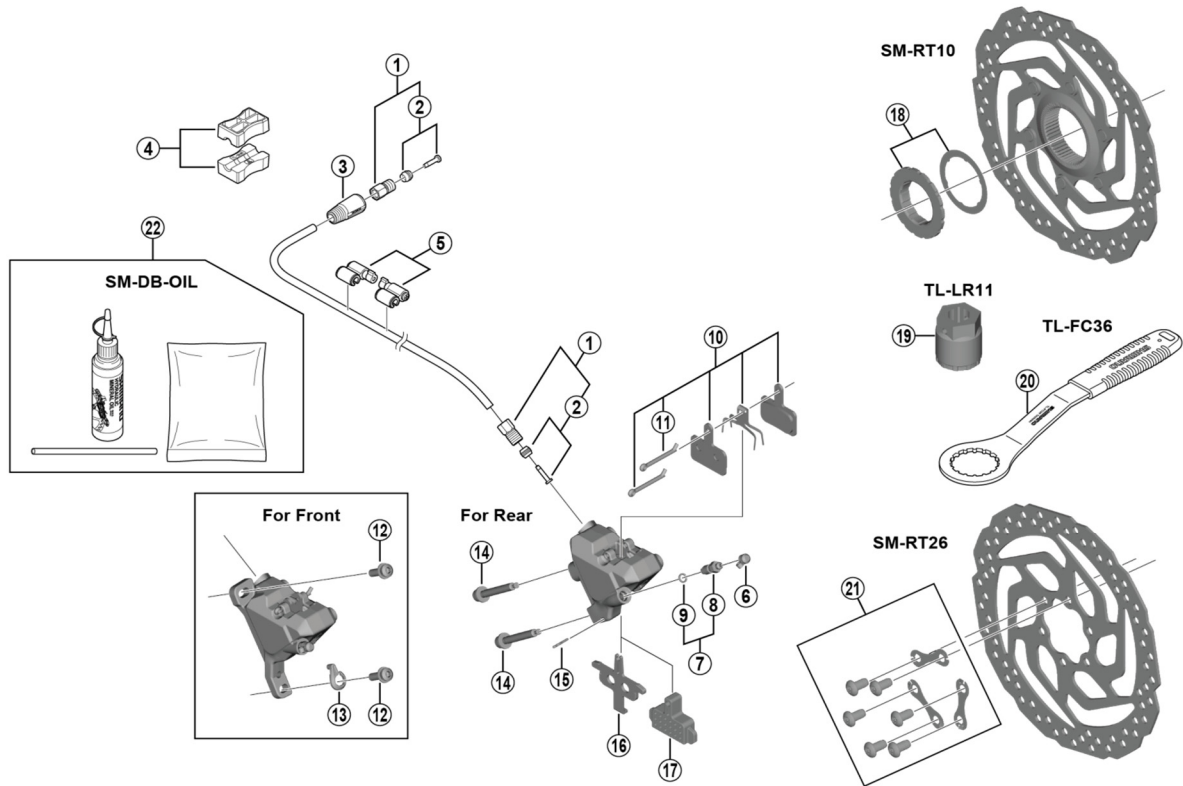


Disc Brake
BR-UR300 Brake Caliper
SM-BH59 Brake Hose

SM-RT10 Disc Rotor/Center Lock
SM-RT26 Disc Rotor/6-Bolt



ITEM NO.	SHIMANO CODE NO.	DESCRIPTION
1	Y8AL98020	Connecting Bolt Unit
2	Y8H298040	Olive & Connector Insert
3	Y1XW04000	Cover
4	Y8H198030	TL-BH61 Shimano original tool (2 pcs.)
5	Y83098040	SM-HANG Hose Supporter A & B
6	Y8B214000	Bleed Nipple Cap
7	Y8ES98020	Bleed Nipple & Seal Ring
8	Y8CL24100	Bleed Nipple
9	Y8B511000	O-Ring for Bleed Nipple
10	Y8C998050	Resin Pad (B01S) & Spring w/Split Pin
11	Y8DB06100	Split Pin
12	Y8N204000	Caliper Fixing Bolt A
13	Y8N205000	Snap Ring
14	Y8N208000	Caliper Fixing Bolt C for 10 mm Rear mount thickness
	Y8N208050	Caliper Fixing Bolt C for 15 mm Rear mount thickness
	Y8N208010	Caliper Fixing Bolt C for 20 mm Rear mount thickness
	Y8N208020	Caliper Fixing Bolt C for 25 mm Rear mount thickness
	Y8N208030	Caliper Fixing Bolt C for 30 mm Rear mount thickness
	Y8N208040	Caliper Fixing Bolt C for 35 mm Rear mount thickness
15	Y8N207000	Bolt Fixing Pin
16	Y8PE03000	Pad Spacer
17	Y8FZ05000	Bleeding Spacer
*	Y8JX98020	Lock Ring (Black) & Washer
19	Y8PW04100	TL-LR11 Lock Ring Removal Tool
20	Y13098000	TL-FC36 Lock Ring Removal Tool
21	Y8NX98010	Rotor Fixing Bolt & Lock Washer
22	Y83998010	Mineral Oil Bleed Kit (50 ml)

Oct.-2018-4411A
 © Shimano Inc. I

Specifications are subject to change without notice.

SHIMANO