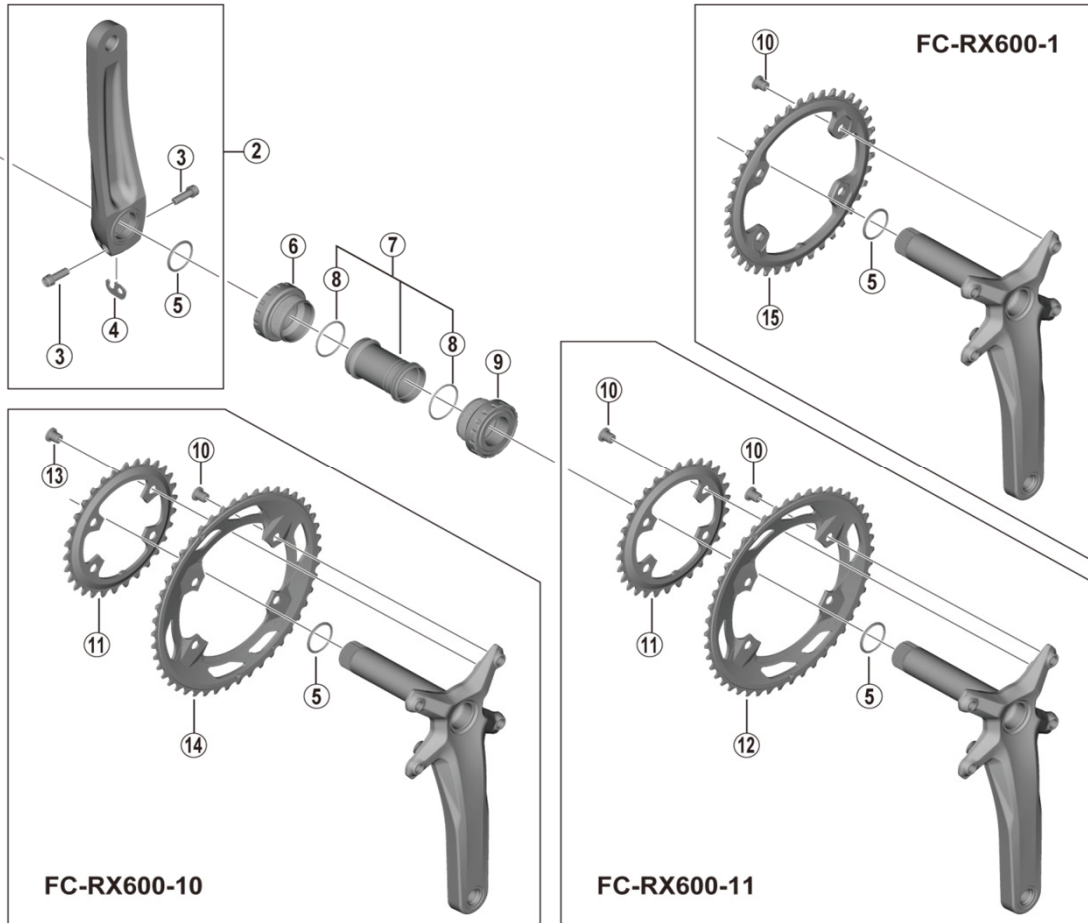


GRX Crankset

FC-RX600

BB-RS500



- Chaining teeth combinations: 46-30T / 40T
- Bolt circle diameter: 110 mm...(For outer gear), 80 mm...(For inner gear)

ITEM NO.	SHIMANO CODE NO.	DESCRIPTION
1	Y1F811100	Crank Arm Fixing Screw
2	Y0K698050	Left Hand Crank Arm Unit 165 mm
	Y0K698020	Left Hand Crank Arm Unit 170 mm
	Y0K698030	Left Hand Crank Arm Unit 172.5 mm
	Y0K698040	Left Hand Crank Arm Unit 175 mm
3	Y1GS00030	Clamp Screw (M6 x 19)
4	Y1GE98050	Plate
5	Y1F316000	Ring
6	Y1RF98010	Left Hand Adapter (B.C.1.37" x 24T) English Thread (BB-RS500)
	Y1RF98020	Left Hand Adapter (M36 x 24T) Italian Thread (BB-RS500)
7	Y1RF98050	Inner Cover & O-Ring
8	Y1TF21000	O-Ring
9	Y1RF98030	Right Hand Adapter (B.C.1.37" x 24T) English Thread (BB-RS500)
	Y1RF98040	Right Hand Adapter (M36 x 24T) Italian Thread (BB-RS500)
10	Y1WD98050	Gear Fixing Screw (M8 x 8.5 / 1 Unit = 4 pcs.)
11	Y0K630000	Chaining 30T-NF
12	Y0K698010	Chaining 46T-NF
13	Y1LV98060	Inner Gear Fixing Screw (M8 x 8.5 / 1 Unit = 4 pcs.)
14	Y0K798010	Chaining 46T-NF
15	Y0K540000	Chaining 40T

May-2020-4579A

© Shimano Inc. I

Specifications are subject to change without notice.

SHIMANO