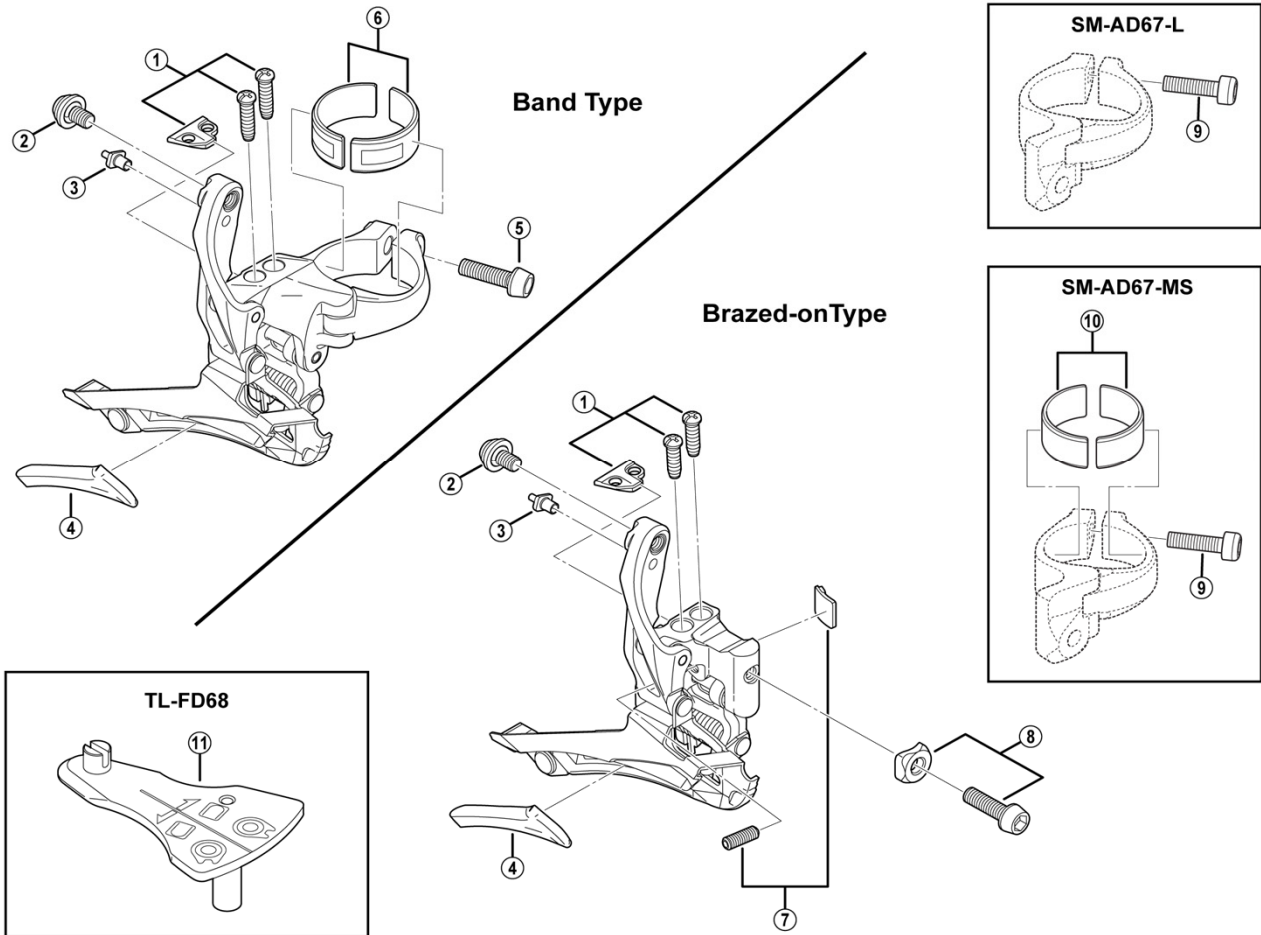


# ULTEGRA Front Derailleur FD-6800



ITEM NO.	SHIMANO CODE NO.	DESCRIPTION	INTERCHANGEABILITY	
1	<b>Y5P198010</b>	Stroke Adjust Screws (M4 x 15) & Plate for Band Type		
	<b>Y5MR98010</b>	Stroke Adjust Screws (M4 x 13) & Plate for Brazed-on Type		
2	<b>Y5P198020</b>	Cable Fixing Bolt Unit		
3	<b>Y5P122000</b>	Converter		
4	<b>Y5P116000</b>	Skid Plate		
5	<b>Y5A407120</b>	Clamp Bolt (M5 x 17)	A	
6	<b>Y5P198030</b>	Adapter (2 pcs.) for Diameter 28.6 mm	B	
* 7	<b>Y2BA98020</b>	Support Bolt & Plate		
8	<b>Y5NF98060</b>	Clamp Bolt (M5 x 15) & Radius Washer	A	
9	<b>Y59L19100</b>	Clamp Bolt (M5 x 17.5) for SM-AD67		
10	<b>Y5JD98020</b>	Adapter (2 pcs.) for SM-AD67-MS / Diameter 28.6 mm (1-1/8")		
11	<b>Y5P598010</b>	Cable Fixing Point Checking Tool (TL-FD68)		

A: Same parts.

B: Parts are usable, but differ in materials, appearance, finish, size, etc.

Absence of mark indicates non-interchangeability.

Specifications are subject to change without notice.

FD-9000

Jul.-2018-3604E

© Shimano Inc. I

# SHIMANO