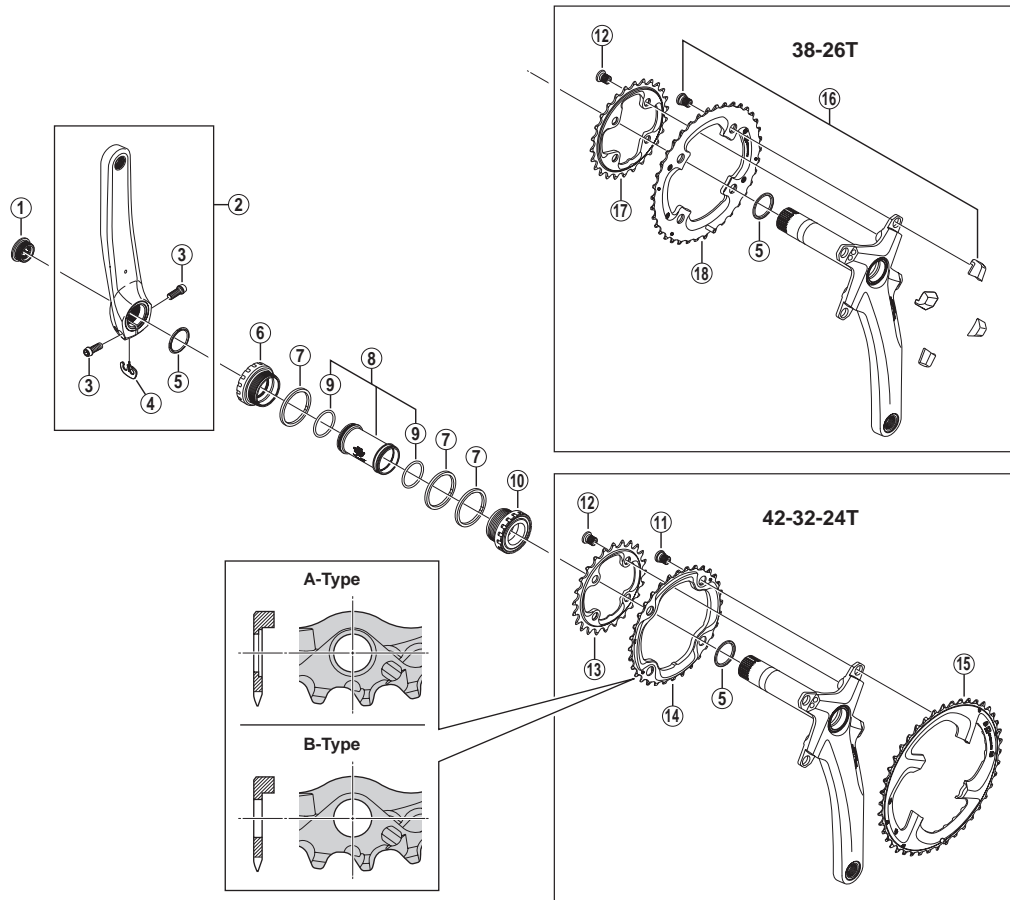


XTR Front Chainwheel FC-M980



- Chainring teeth combinations: 42-32-24T / 38-26T
- Bolt circle diameter: 104 mm...(For outer gear and middle gear), 64 mm...(For inner gear)

FC-M985

ITEM NO.	SHIMANO CODE NO.	DESCRIPTION	INTERCHANGEABILITY
1	Y1LR13000	Crank Arm Fixing Bolt	A
2	Y1LR98040	Left Hand Crank Arm 165 mm	B
	Y1LR98050	Left Hand Crank Arm 170 mm	B
	Y1LR98060	Left Hand Crank Arm 175 mm	B
	Y1LR98070	Left Hand Crank Arm 180 mm	B
3	Y1E512100	Clamp Bolt (M6 x 15)	A
4	Y1GE98050	Plate	A
5	Y1F316000	Ring	A
6	Y1LR98080	Left Hand Adapter (B.C.1.37" x 24T) English Thread	A
7	Y1F813000	Spacer (2.5 mm)	A
8	Y1LR98090	Inner Cover & O-Ring	A
9	Y1TF21000	O-Ring	A
10	Y1LR98100	Right Hand Adapter (B.C.1.37" x 24T) English Thread	A
* 11	Y1LR98110	Double Gear Fixing Bolt (M8 x 10.65 / 4 pcs.) for 32T A-Type	
	Y1LR98130	Double Gear Fixing Bolt (M8 x 10.65 / 4 pcs.) for 32T B-Type	
12	Y1H598160	Inner Gear Fixing Bolt (M8 x 10.1 / 4 pcs.)	
* 14	Y1LR24000	Chainring 24T-AE	
	Y1LR98020	Chainring 32T-AE (A-Type) Discontinued	
	Y1LR98140	Chainring 32T-AE (B-Type) w/Fixing Bolt 4 pcs.	
15	Y1LR98010	Chainring 42T-AE	
16	Y1LR98120	Gear Fixing Bolt (M8 x 10.65) & Nut (4 sets)	
17	Y1LR26000	Chainring 26T-AH	
18	Y1LR98030	Chainring 38T-AH	

A: Same parts.
B: Parts are usable, but differ in materials, appearance, finish, size, etc.
Absence of mark indicates non-interchangeability.

Mar.-2012-3086A
© Shimano Inc. I

Specifications are subject to change without notice.

SHIMANO