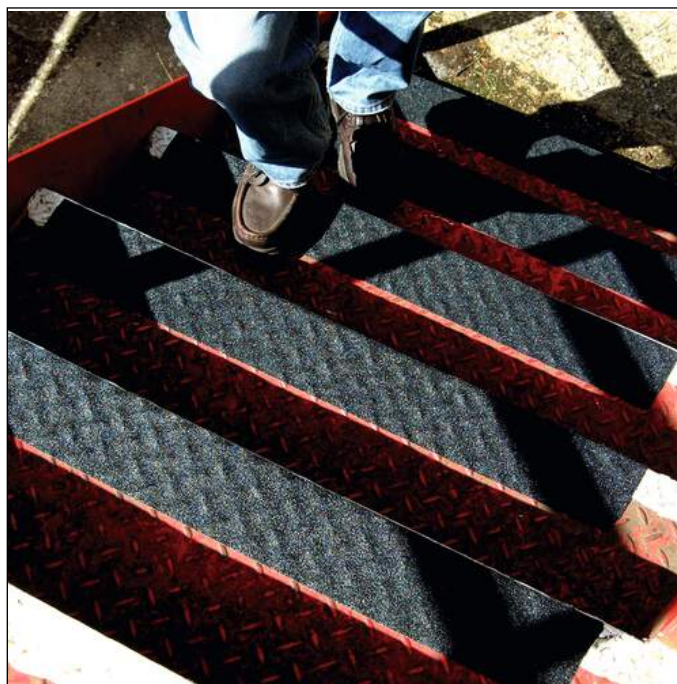


# Anti-Slip Tape DURALINE® GRIP+ FORMFIT 50 mm conformable

Article number	106401	Sales unit quantity	1 piece
Colour	black	VE EAN	4005546733852
Packaging unit	1 piece	Packing weight (gross)	G
Base EAN	4005546733852	Country of origin	GB



## Product description

- Self-adhesive conformable anti-slip tape for improved safety of paths and treads
- Suitable for indoor and protected outdoor use
- The deformable aluminium tape adapts to uneven surfaces and is particularly suitable for surfaces made of checker or lens plates
- Areas of application are stair treads, ramps, industrial floors and tread surfaces on machines and vehicles
- In accordance with ASR A1.5/1.2 "Floors" to DIN 51130 slip resistance (R group) R13
- Length: 15 m | Width: 50 mm

## Product features

Outer width (mm)	50
Outer depth/length	15 m
Brand	DURABLE
Self-adhesive type	permanent
Abrasion resistance	high
Material thickness	1.12
Application area	Walking area

106401\_PDS\_DURABLE\_en.pdf | 2022.05.24 01:40

1/2

# Anti-Slip Tape DURALINE® GRIP+ FORMFIT 50 mm conformable

Diameter of roll holder (mm)

76

## Technical Datasheet

## ANTI-SLIP TAPE DURALINE® GRIP+ FORMFIT 50 MM



art-no. 106401  
 colour black (RAL 9004)  
 EAN 4005546733852

Self-adhesive conformable anti-slip tape for improved safety of paths and treads.

### technical informationen

<b>material</b>		
back carrier	soft aluminium	
type of adhesive	solvent acrylic	
cover	siliconised treated release paper	
surface	abrasive aluminium oxide particles held in place by a polymer resin	
grit	36	
colour	black (RAL 9004)	
execution	straight cutted edges	
R-value	R13	according to DIN 51130:2014-02
<b>dimensions</b>		
total thickness (mm)	1,12	
thickness / back carrier (mm)	0,075	
width (mm)	50	
length (m)	15	
<b>adhesive properties</b>		
adhesion to steel (g/25,4 mm <sup>2</sup> )	> 2.000	according to PSTC-4
peel adhesion (N/25 mm)	17,7	180° FINAT FTMI
tensile strength (N/25 mm)	148,63	Lloyd, 500 N load cell
<b>packaging</b>		
packaging	1 piece in a corrugated carton	
weight	400 g/piece	
<b>storage</b>		
storage	in original packaging, store in dry conditions	
storage conditions	ca. 21° C, ca. 55 % humidity	
storage time	ca. 18 month	

<b>processing temperatures</b>		
temperature range	-30° C to +160° C	
<b>application</b>		
areas of application	indoor- and protected outdoor use	
<b>resistance</b>		
product durability	12 – 24 month	according to PSTC-9

**DURABLE**  
 Hunke & Jochheim GmbH & Co. KG  
 Westfalenstraße 77-79  
 D-58636 Iserlohn

Telefon +49 (0) 2371 / 662 – 0  
 Telefax +49 (0) 2371 / 662 – 221  
 Internet www.durable.de  
 E-Mail durable@ durable.de

The statements contained herein are for informational purposes only and are true and accurate to the best of our scientific and technical knowledge. This information does not constitute a guarantee or warranty, express or implied, nor does it establish a legally valid contractual relationship. It is the customer's responsibility to determine the suitability of this product for the customer's intended use. DURABLE does not assume any liability for the customer's use of this product or the information contained herein.



<b>notes on application</b>	
floor conditions	The surface must be dry, firm, flat and closed and free of dirt, grease, dust, tar, wax and other dirt. In the case of heavy soiling, clean beforehand with a commercially available IPA cleaner (isopropyl alcohol 99,9 %). Never use cleaners that contain chlorine or citrus. Always clean with water and soap after cleaning with degreasing agent. After cleaning, wait at least half an hour until the surface has completely dried. Only then apply DURALINE®. A primer is recommended on concrete, wood and asphalt.
application	Before using DURALINE®, you should first use a test strip to check whether the floor is suitable for DURALINE®. Mark the place where DURALINE® is to be attached. Then remove approx. 10 cm of the protective film and press the material with the adhesive side firmly onto the floor. Unroll as much material as you need. Remove the protective film with one hand while pressing the material with your other hand. For a better adhesive result, we recommend a pressure roller in order to press the material evenly over the entire surface. Please do not glue the material overlapping.
usage	After attaching, the material is immediately accessible on foot, full usage is possible after 48 hours.

cleaning	DURALINE® can be cleaned with (warm) water and commercially available cleaning agents.
removing DURALINE®	Start pulling the material off the floor at one corner. Heat facilitates removal; a temperature of 60° - 70° C is ideal. To remove adhesive residues, we recommend alcohol or a strong solvent. Test the compatibility on the floor beforehand.
disposal	The product can be incinerated or disposed of in the conventional way. The waste disposal code is 20.01.04.
warranty	DURALINE® products are conditionally warranted 2 years from purchase. Warranty claims are only limited to replacement of DURALINE. The warranty does not cover the maneuvering of vehicles or items being dragged, pushed or scraped across such as pallets or transit skids.

<b>note</b>	All technical data represent non-binding average values. Appropriate tests should decide on the usability. We reserve the right to make changes in the course of technical progress to improve the product.
-------------	-------------------------------------------------------------------------------------------------------------------------------------------------------------------------------------------------------------

#### DURABLE

Hunke & Jochheim GmbH & Co. KG  
Westfalenstraße 77-79  
D-58636 Iserlohn

Telefon +49 (0) 2371 / 662 – 0  
Telefax +49 (0) 2371 / 662 – 221  
Internet [www.durable.de](http://www.durable.de)  
E-Mail [durable@ durable.de](mailto:durable@ durable.de)

The statements contained herein are for informational purposes only and are true and accurate to the best of our scientific and technical knowledge. This information does not constitute a guarantee or warranty, express or implied, nor does it establish a legally valid contractual relationship. It is the customer's responsibility to determine the suitability of this product for the customer's intended use. DURABLE does not assume any liability for the customer's use of this product or the information contained herein.

