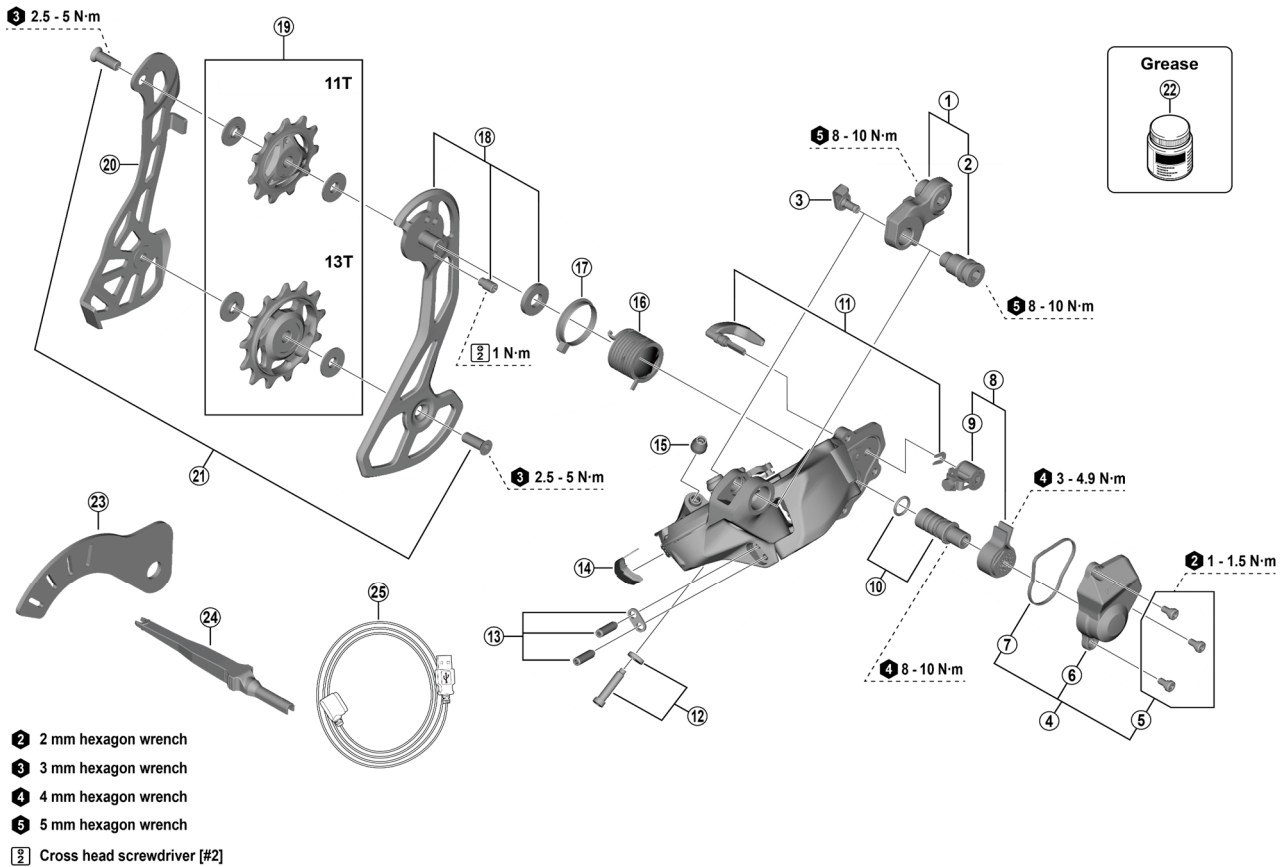


# GRX Rear Derailleur RD-RX825 12-speed



ITEM NO.	SHIMANO CODE NO.	DESCRIPTION	INTERCHANGEABILITY		
1	Y3J198020	Mounting screw unit	B	A	B
2	Y3J142000	B-Axle	B	A	B
3	Y3GK51000	Stay cable		A	
4	Y3JS98020	Plate cover unit			A
5	Y5Y198070	Plate unit cover screw set (3 pcs.)	A		A
6	Y3JS9801T	Plate unit cover			
7	Y3FK41000	Plate unit cover gasket	A		A
8	Y3GE98060	Stabilizer unit	A		A
9	Y5Y198120	Cam unit	A		A
10	Y5PV98060	Plate axle and O-ring	A		A
11	Y3JS98030	Switch lever unit and fixing plate			A
12	Y3JN98040	End adjust screw and plate	B	A	B
13	Y3J198030	Stroke adjusting screws and plate		A	
14	Y3J145000	Charger cover		A	
15	Y3GK89000	Boot		A	
16	Y5PV17000	Plate tension spring			A
17	Y5PV24000	P-seal ring			A
18	Y3K498010	Outer plate assembly			
19	Y3JS98010	Tension and guide pulley set			A
20	Y3JS9802T	Inner plate			A
21	Y3FW98090	Pulley screw (2 pcs.)	A	B	A
22	Y04121000	Grease for stabilizer (Net. 50 g)	A		
23	Y3K49801T	G-pulley setting tool			A
24	Y7HE40000	TL-EW300 Plug tool		A	
25	IEWEC300A	EW-EC300 Charging cable		A	

A: Same parts.

B: Parts are usable, but differ in materials, appearance, finish, size, etc.

Absence of mark indicates non-interchangeability.

Specifications are subject to change without notice.

Torque information is listed.

May-2024-5052

© Shimano Inc. I

# SHIMANO

