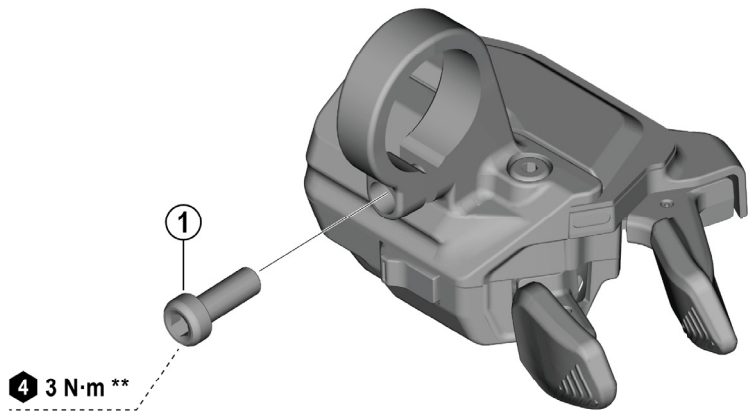
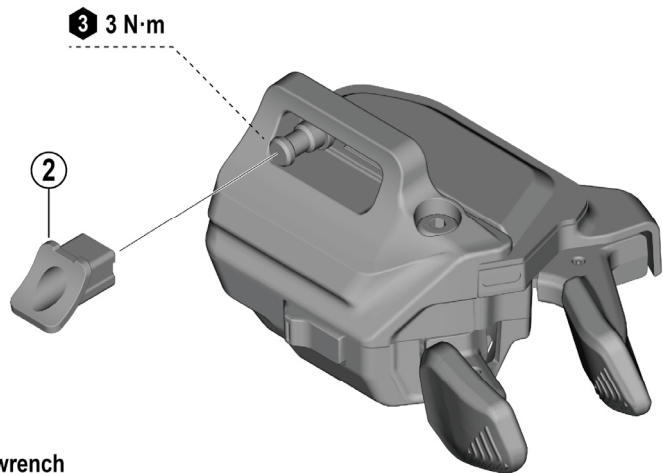


DEORE Shift Switch  
**SW-M6250-R**  
**SW-M6250-IR** I-SPEC EV

SW-M6250-R



SW-M6250-IR



**3** 3 mm hexagon wrench

**4** 4 mm hexagon wrench

**\*\*** When installing parts onto a carbon frame/handlebar, confirm the recommended tightening torque with the carbon frame or handlebar manufacturer. This will prevent damage to the frame/handlebar due to over-torquing or inadequate securing of the components.

ITEM NO.	SHIMANO CODE NO.	DESCRIPTION	SW-M9250		SW-M8250	
			INTERCHANGE-ABILITY			
1	Y6T842000	Mounting screw (M5 x 13.5)	B	B		
2	Y0GT10000	Unit position adjustment nut	B	A		

A: Same parts.

B: Parts are usable, but differ in materials, appearance, finish, size, etc.

Absence of mark indicates non-interchangeability.

Specifications are subject to change without notice.

Torque information is listed.

Jun.-2025-5117

© Shimano Inc. I

**SHIMANO**



quefairedemesdechets.fr