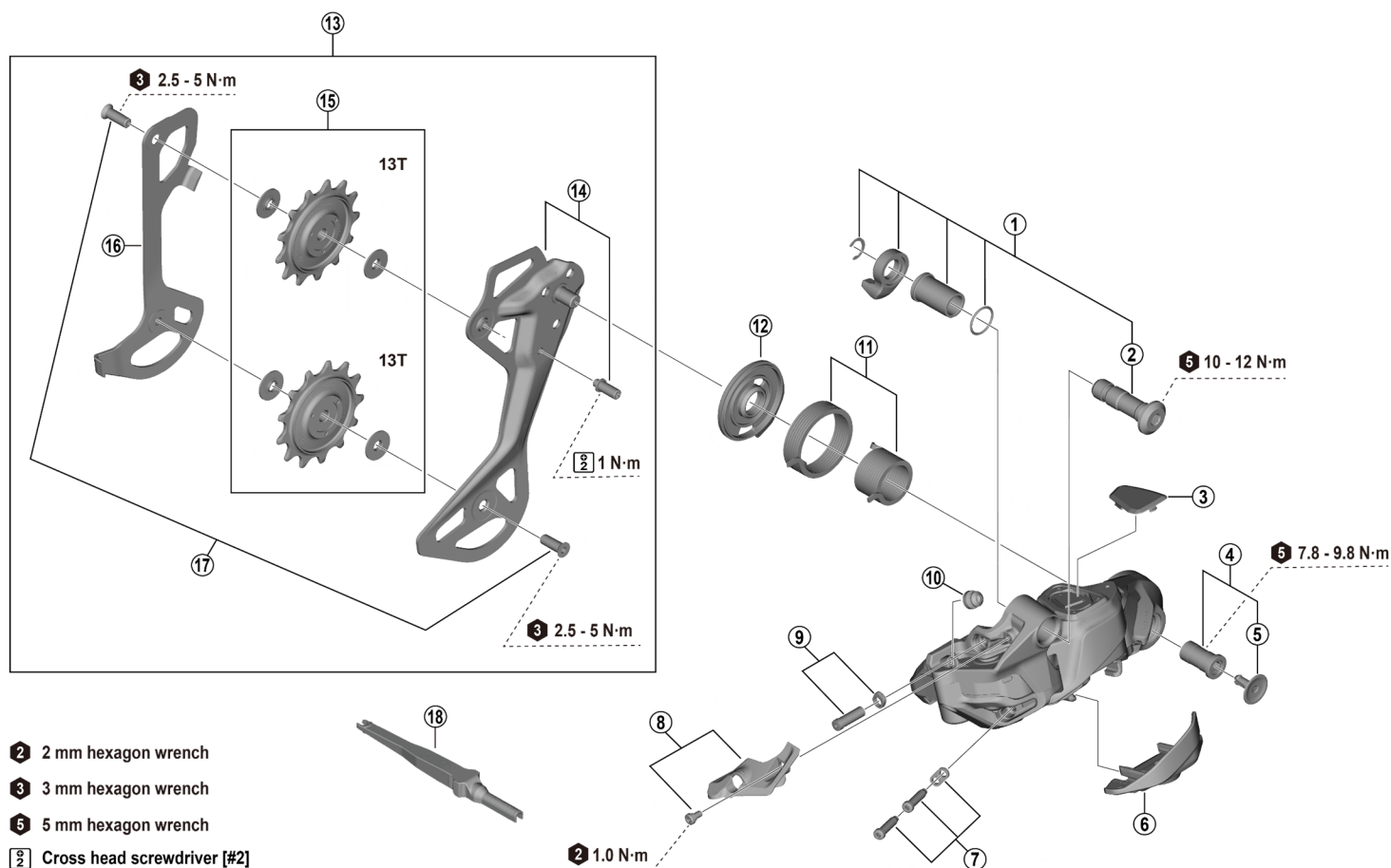


# DEORE Rear Derailleur

## RD-M6250-SGS 12-speed



ITEM NO.	SHIMANO CODE NO.	DESCRIPTION	INTERCHANGEABILITY		
1	Y3KA98060	B-axle unit	B	A	A
2	Y3KA9801T	B-axle	B	A	A
3	Y3K79802T	Outer link cap	A	A	
4	Y3KA98070	Plate axle and cap	B	A	A
5	Y3K79803T	Plate axle cap	A	A	A
6	Y3KA98080	Battery holder		A	
7	Y3HY98030	Stroke adjusting screws and plate	B	A	A
8	Y3K798050	Cable cover and fixing screw	A	A	
9	Y3K798060	End adjust screw and plate	A	A	A
10	Y3KR9801T	Plug cover	A	A	A
11	Y3K798070	Plate tension spring unit	A	A	A
12	Y3K79805T	Plate bumper	A	A	A
13	Y3KS98020	Plate unit (SGS)	B	B	A
14	Y3KS98030	Outer plate assembly (SGS)	B	B	A
15	Y3KA98030	Pulley set	B	A	A
16	Y3KS98010	Inner plate (SGS)	A	A	A
17	Y3FW98090	Pulley screw (2 pcs.)		A	A
18	Y7HE40000	TL-EW300 Plug tool	A	A	A

A: Same parts.

B: Parts are usable, but differ in materials, appearance, finish, size, etc.

Absence of mark indicates non-interchangeability.

Specifications are subject to change without notice.

Torque information is listed.

Jul.-2025-5114A

© Shimano Inc. I

# SHIMANO

