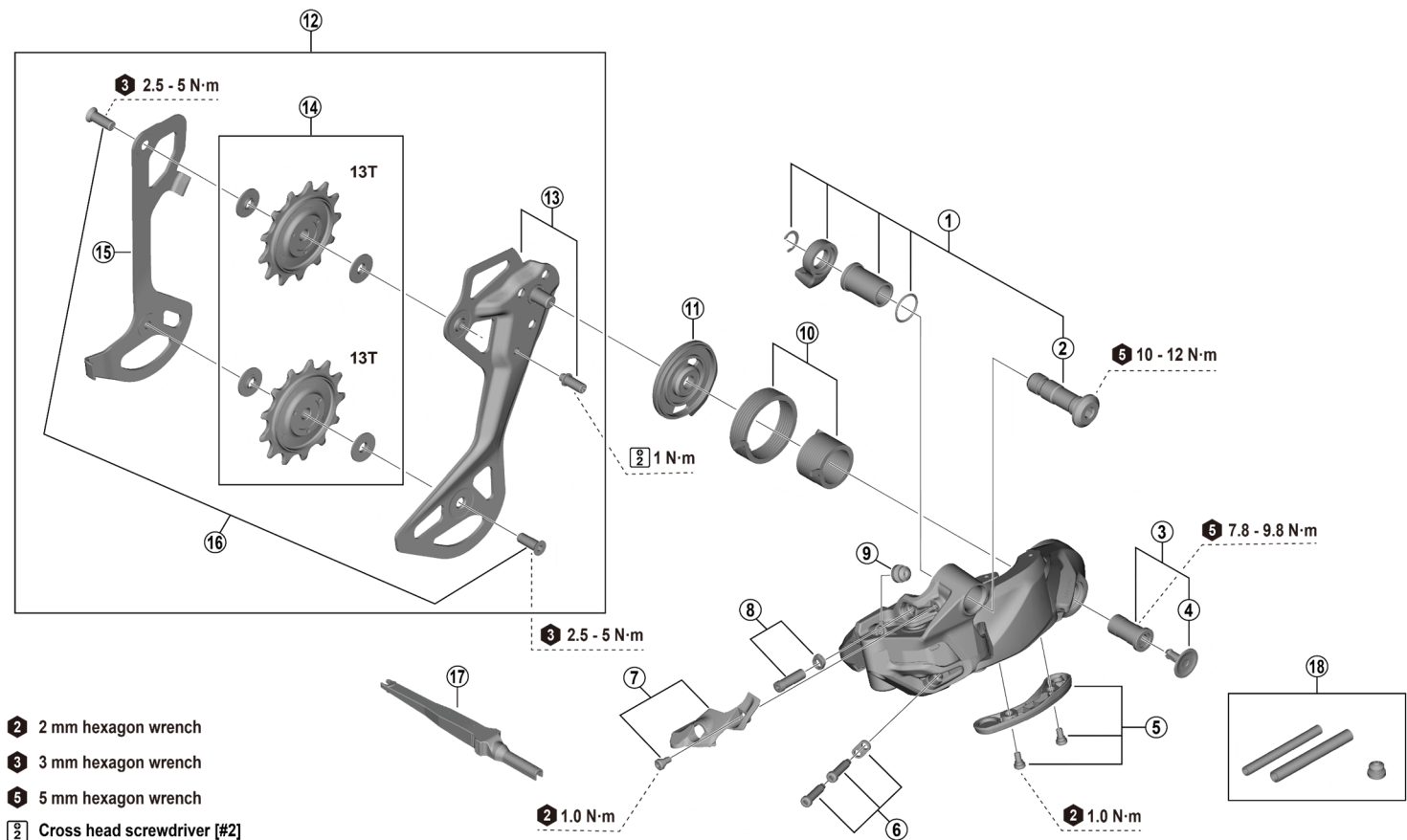


DEORE Rear Derailleur

**RD-M6260-12** 12-speed

**RD-M6260-11L** 11-speed



ITEM NO.	SHIMANO CODE NO.	DESCRIPTION	INTERCHANGEABILITY		
			RD-M9260-SGS-12	RD-M8260-SGS-12	RD-M6250-SGS
1	Y3KA98060	Mounting screw unit			
2	Y3KA9801T	Mounting screw	B	A	A
3	Y3KA98070	Plate axle and cap	B	A	A
4	Y3K79803T	Plate axle cap	A	A	A
5	Y3K898010	Outer link bumper and fixing screws	A	A	A
6	Y3HY98030	Stroke adjusting screws and plate	B	A	A
7	Y3K898020	Cable cover and fixing screw	A	A	
8	Y3K798060	End adjust screw and plate	A	A	A
9	Y3KR9801T	Plug cover	A	A	A
10	Y3K798070	Plate tension spring unit	A	A	A
11	Y3K79805T	Plate bumper	A	A	A
12	Y3KS98020	Plate unit (SGS) for RD-M6260-12	B	B	A
	Y3KV98010	Plate unit (SGS) for RD-M6260-11L			
13	Y3KS98030	Outer plate assembly (SGS)	B	B	A
14	Y3KA98030	Pulley set for RD-M6260-12	B	A	A
	Y3KC98020	Pulley set for RD-M6260-11L			
15	Y3KS98010	Inner plate (SGS)	A	A	A
16	Y3FW98090	Pulley screw (2 pcs.)		A	A
17	Y7HE40000	TL-EW300 Plug tool	A	A	A
18	Y3K898030	Protective sleeve set (dia. 4.8 and dia. 6) with plug cover	A	A	

A: Same parts.

B: Parts are usable, but differ in materials, appearance, finish, size, etc.

Absence of mark indicates non-interchangeability.

Specifications are subject to change without notice.

Torque information is listed.

Jul.-2025-5115A

© Shimano Inc. I

SHIMANO



quefairedemesdechets.fr